

# Portishead Summer Show



At The Show Field, Clevedon Road, Portishead BS20 7RA  
SATURDAY 30TH AND SUNDAY 31ST JULY 2022



## CLASS SCHEDULE

Includes details of classes  
entry requirements and  
arena events

FREE PARKING



£1.00

For what's on and when see  
[www.portisheadsummershow.com](http://www.portisheadsummershow.com)



# PROUDLY SUPPORTING

Portishead  
Summer Show  
30th & 31st July 2022

# GOODMAN & LILLEY

THE INDEPENDENT SALES, LETTINGS & LAND AGENTS

Rembrant House, 36 High Street, Portishead BS20 6EN

Sales: 01275 430440 | [sales@goodmanlilley.co.uk](mailto:sales@goodmanlilley.co.uk)

Lettings: 01275 299010 | [lettings@goodmanlilley.co.uk](mailto:lettings@goodmanlilley.co.uk)

THE SHOW IS ORGANISED AND HOSTED BY THE  
**PORTISHEAD AND DISTRICT  
HORTICULTURAL SOCIETY**

Founded 1863



**Portishead**  
**Summer Show**

Official Opening:

Saturday 12 noon by local magazine editor Tracey Fowler

Blessing by: Reverend Dave Francis, Gordano Valley Church

**ADMISSION DETAILS:**

**TICKETS CAN BE PURCHASED**

In advance via [www.portisheadsummershow.com](http://www.portisheadsummershow.com)

@ £7.50 up to and including 29.7.2022 or

£8 on the gate and for two days @ £11

Children under 17 are admitted free of charge

**SHOW OPENING HOURS**

Saturday: 11.30am-5.30pm approx.

No public admission is permitted to marquees whilst judging is in progress

Sunday: 10am-5.30pm approx.

Exhibitors will only be allowed to remove exhibits when a signal is given

Free car park - Gordano Sports Field only

**NO VEHICLES ALLOWED ON SHOW FIELD AFTER**

**11.30am ON SATURDAY OR BEFORE 5.30pm ON SUNDAY**



01275 375292



Follow us

A Garden Centre  
with plants at its  
heart

Twelve acres of  
gardener's paradise

---

The Garden Tea Room

Leigh Court Estate Pill Road Abbots Leigh Bristol BS8 3RA  
[www.brackenwood-plantandgardencentre.com](http://www.brackenwood-plantandgardencentre.com)



# Hints and Tips for New Exhibitors

## Welcome to the Show!

We are delighted to have you with us. Here are some essential tips so that you know exactly what to do and when:

Complete all details on both sides of the entry form at the back of the programme

Deliver entry form and fees to the Folk Hall on Saturday between 10am and 3pm or to the Show Field between 10am and noon and on the Monday or Tuesday before the Show as described on the form. Late entries will not be accepted.

Photographic exhibits need their own form so complete a second form for those AND both the photographs and form must be handed in by 7pm on the Monday before the Show

Handwriting and Poetry exhibits also need to be given in by 7pm on the Monday before the Show

Collect entry (class) cards from the Pavilion at the Show Field on Friday 6pm-9pm (you can take until 10pm to stage the exhibits) or Saturday 7am-9am

Find the class number on the tables in one of the two marquees - Horticultural (on the left) and Handicraft & Children's (on the right)

Place your exhibit on the table with your entry card face down (so that only the class and exhibitor number on the back are showing)

Come and enjoy the Show!

If you are lucky enough to have won 1st, 2nd or 3rd you can collect the prize money on Sunday 2.30pm-6.30pm from the Pavilion

If you've won a cup, join us for the Trophy Presentation at 5pm on SUNDAY

Exhibits must not be removed before 5.30pm on Sunday (any perishable items not claimed by 6.30pm will be disposed of)

**You don't have to be a master gardener to enter!**

(separate tips/guide for how to show produce entries is available online 'Before the Show' on [www.portisheadsummershow.com](http://www.portisheadsummershow.com) or email [info@portisheadsummershow.com](mailto:info@portisheadsummershow.com) for a copy)

# ASTRON

## FIRE & SECURITY

PROTECTING WHAT YOU VALUE

We are proud to be your local installer of

**Fire Alarms | Intruder Alarms | CCTV | Access Control  
Fire Extinguishers | Emergency Lights | Nursecall & Staff Attack**

We will ensure that your systems are fully compliant with current legislation, backed up by our audited accreditations with NSI and BAFE

**We protect your people, your property, and your peace of mind**

Give our friendly team a call on

0800 999 3 911

or

01275 373 098





## Background Information and Acknowledgements

The Portishead Summer Show is run by the Portishead and District Horticultural Society, who are affiliated to the Royal Horticultural Society, Somerset Federation of Gardening Clubs and The Association of Show and Agricultural Organisations.

The 2022 Show will be our 159th Show, as the first show was held in 1863.

It is the major event in the Portishead calendar and has continued to adapt to reflect changing times. It is primarily an opportunity for the Portishead community, young and old, to come together in the summer to showcase local talent and to enjoy arena entertainment.

The Show can only run because of the fantastic support we receive and we are extremely grateful to the many people who help us to in no small measure to make the Show successful.

Particular thanks to the volunteers and stewards who help in setting up and dismantling the Show, manning the gates, stewarding and administration and, of course, serving in the refreshment tent.

Thanks also to the Show judges who so professionally undertake their duties. Portishead Floral Art Society who assist with the floral art exhibits; Barrie Bluer and Charles Bennett who organise the display of the photographic entries; Mr Terry Rollings who assists with the plumbing and to the Gordano Sports Centre Management Committee and Gordano School for the use of the car parking facilities. Not forgetting our many patrons, sponsors and members for their continued support, all the local traders who purchase advertising space, donate raffle prizes and sell schedules and of course all our visitors.

If you would like to volunteer and get involved in this community event please call 07989 140367 or email [info@portisheadsummershow.com](mailto:info@portisheadsummershow.com)

# EVOLVE

DENTISTRY

## OFFERING A WIDE RANGE OF TREATMENTS

From general dentistry to full smile make-overs

---

Tooth Whitening | Braces | Bioclear Bonding  
Dentures | Dental Health Plans  
Facial Aesthetics

---

BOOK YOUR FREE CONSULTATION WITH OUR TREATMENT CO-ORDINATOR

CALL US ON 01275 842 550

EVOLVE-DENTISTRY.CO.UK

EVOLVE | EVOLVE  
DENTISTRY FACE





# Meet The Team

**PRESIDENT:** Mr Michael Grandfield

**VICE PRESIDENT:** Mrs Jane Pagano

**Chairman:** Mr Peter Burden

**General Secretary & Arena Events:** Mrs Linda Hodgetts Tel: 07989 140367

**Show Secretary:** Mrs Jane Pagano Tel: 07875 388079

**Horticultural Secretary:** Mr Arthur Terry

**Judges Secretary:** Mrs Georgina Meech Tel: 07811 565930

**Handicrafts Secretary:** Mrs Elaine Hall Tel: 07898 193563

**Honorary Treasurer:** Mr Ian Pritchard

**Trade Secretary:** Mrs Anne Pillary Tel: 07846 323892

**Field Steward:** Mr Peter Boraston

**Field Lettings:** Mr Peter Burden Tel: 01275 848087

**Catering Officers:** Mrs Kate Ward Tel: 01275 842926 - Mrs Steph Lomax Tel: 07986 985712

**Cups & Trophies:** Mrs Liz Burden Tel: 01275 848087

To contact any of the above please email [info@portisheadsummershow.com](mailto:info@portisheadsummershow.com)

[www.portisheadsummershow.com](http://www.portisheadsummershow.com)

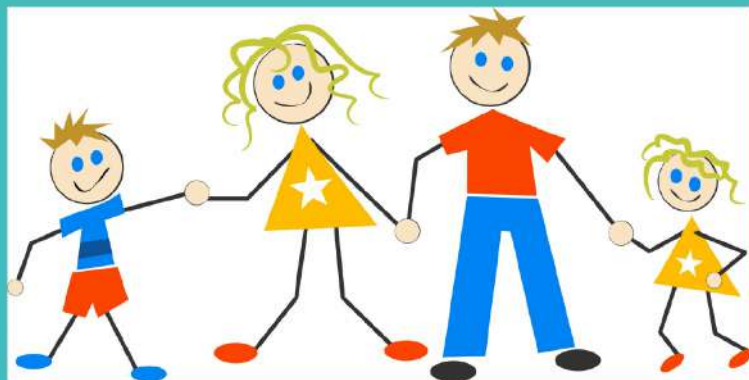
[www.portisheadhorticultural.org.uk](http://www.portisheadhorticultural.org.uk)

All details in the schedule are correct at the time of going to press

Affiliated to the Royal Horticultural Society Member of the Somerset Federation of Gardening Clubs

Portishead Show Field, Clevedon Road, Portishead BS20 7RA (All Post to Secretary's Address)

# Footwear for all the Family



## Finding the right shoe for your sole

62 High St,  
Portishead  
01275 843399

www.

**SoleLution**.co.uk

1-2 Boyces Av,  
Clifton  
0117 973 8350

Supporting the Portishead Summer Show

# tonic

hair and beauty house



Call now to book your appointment and get summer ready

[www.tonichairandbeautyhouse.com](http://www.tonichairandbeautyhouse.com)

01275 843 554   #tonicportishead

2 Combe Road | Portishead | BS20 6BJ [enquiries@tonichairandbeautyhouse.com](mailto:enquiries@tonichairandbeautyhouse.com)



# REGULATIONS GOVERNING THE SHOW

## **1. ENTRIES**

Show entry forms can be taken to:

Saturday 24th July- The Folk Hall between 10am and 3pm or to the Flower Show Field between 10am and noon  
Monday 26th July or Tuesday 27th July to the Flower Show Field , Clevedon Road, Portishead, BS20 7RA  
between 10.00am and 7.00pm. Alternatively entry forms can be hand delivered or posted to Mrs Elaine Hall,  
27 Falcon Close, Portishead, BS20 6UT. Entry fees will be forfeited for all entries not staged. All photographs,  
poems and handwriting to be handed in before 7pm on the Monday before the Show.

## **2. STAGING**

Exhibitors will be allowed to stage their exhibits on the Friday evening from 6pm to 10pm and Saturday  
7am to 9am, after which the tents will be cleared for judging.

NB. THE OFFICE IS CLOSED FOR THE COLLECTION OF CLASS CARDS FROM 9PM FRI TO 7AM SAT.

## **3. CLASS CARDS**

No exhibitor is to stage an exhibit until a Class Card has been obtained from the Secretary's Office.  
An infringement of this rule will disqualify the exhibitor from receiving a prize.

## **4. EXHIBITS**

No prize shall be awarded for any exhibit where the exhibitor has received help or advice on the  
arrangement of the exhibit in Classes 311 to 320.

## **5. INSPECTION OF EXHIBITS**

The Committee reserves the right to inspect the exhibits after the entries have been made. Any exhibitor  
refusing to allow a visit shall, at the discretion of the Committee, forfeit all entry fees and be excluded from  
exhibiting.

## **6. LIABILITY FOR LOSS OR DAMAGE**

The Committee will take no responsibility for loss or damage to exhibits, articles shown for display or sale, or  
personal property. Night security will be provided although the same conditions will apply as above.

## **7. JUDGES**

The Committee shall appoint the Judges, who may give extra prizes for any exhibit that shall be deserving of  
that distinction, and may withhold prizes from any exhibit they may deem unworthy. No judges to be  
approached by any person other than official stewards. Any protest against the decisions of the Judge of the  
award of a points prize must be made no later than 5pm on the Saturday of the Show. Whilst an appeal is  
permitted, the committee reserves the right to charge £5.00 for this which will be refunded in the event that  
the appeal is upheld. Subject to the determination of any protest THE JUDGES DECISION IS FINAL and  
BINDING.

## **8. HANDLING OF EXHIBITS**

No person except the Judges, Committee, or Exhibitor shall be allowed to touch or handle any specimen  
exhibited for competition after the exhibits are staged.

## **9. BONA FIDE OF EXHIBIT**

No prize shall be awarded for any flowers, plants, fruit or vegetables, which have not been grown by the  
exhibitor at least two months before the Show, and the exhibits in all cookery and handicraft classes shall have  
been made or prepared by the exhibitor. Every exhibitor on making his/her entry will be required to make a  
declaration to this effect. Section 5 and Children's classes excluded from this ruling.



## **10. DEFINITION OF AN AMATEUR**

An Amateur is a person who neither makes gardening a business nor employs a full time gardener. Only an amateur may enter in the Member or Novice classes.

## **11. DEFINITION OF A NOVICE**

A novice is a person who has not previously won a first prize in this show for a similar exhibit to that shown in the description of the class in which he or she is exhibiting, e.g. a person who has won a first prize for an exhibit of dahlias in this show cannot enter in Class No. 3.

## **11a. DEFINITION OF A SENIOR CITIZEN**

A person who is aged 60 or over at the date of the show

## **12. LIMITATION OF PRIZES**

No exhibitor will be permitted to take more than one prize in each class (Special Prizes and Challenge Cups excepted).

## **13. UNEFAIR COMPETITION**

Any person exhibiting flowers, plants or fruit belonging to another (excepting Classes already stated in Regulation 9) and entering them as his or her own, exercising any artifice to deceive the Judges, or otherwise attempting to gain prizes by unfair means, or in any way infringing any of these rules, shall forfeit all prizes which may have been allotted to him or her, and the Committee reserves to itself the power to refuse future entries from any such exhibitor. Complaints under this rule must be made to the Secretary before 7.00pm on the first day of the Show. Persons lodging complaints must deposit £5.00 with the Secretary. Unless the case is proved, this deposit will be forfeited. The decision of the Committee in all cases will be final.

## **14. PRIZE MONEY**

ALL PRIZE MONIES WILL BE PAID OUT ON THE FIELD AT THE TREASURER'S OFFICE FROM 2.30PM TO 6.30PM ON THE SECOND DAY OF THE SHOW. Where sponsorship has been obtained for prizes with a greater value than the published prize money then the sponsors prize will be paid.

## **14A. GRAND DRAW PRIZES**

DRAW PRIZES CAN BE COLLECTED FROM THE SOCIETY'S STAND IN THE CENTRE MARQUEE AFTER THE ANNOUNCEMENT AT ABOUT 6PM ON THE SECOND DAY. UNCLAIMED DRAW PRIZES MAY BE OBTAINED BY CALLING MRS LINDA HODGETTS, 01275 817350, FROM THE MONDAY FOLLOWING THE SHOW FOR SEVEN DAYS. A CALL WILL BE MADE TO THOSE WHO ARE NOT PRESENT AT THE DRAW.

## **15. REMOVAL OF EXHIBITS**

Exhibits must not be removed until after the prize presentation on the second day of the Show and must be removed before 6.30pm. Only legitimate exhibitors may remove exhibits.

16. All cut flowers to be shown in containers provided by the exhibitor. Fruit, vegetable and egg exhibitors must provide their own dishes.

17. Definitions of classes are taken from the 'Horticultural Show Handbook' published by RHS

## **18. NAME OF EXHIBITS**

All exhibits should be correctly named, if possible. Error in naming will not disqualify, but the Judges will recognise correctness in naming as telling in favour of an exhibitor in a close competition. EXHIBITORS ARE ENCOURAGED TO MARK THEIR EXHIBITS WITH THE VARIETY NAME FOR THE BENEFIT OF OUR VISITORS.

## **19. SPACING**

Unless otherwise stated, spacings shown in the schedule are for the full width of table, ie approx 76cm.



**20.** For the purpose of the Show, a bowl is a vessel for displaying cut flowers in water or for growing bulbous plants, and having a diameter at its mouth at least equal to but usually greater than, its height. A vase is a vessel for displaying cut flowers in water and having a greater height than the diameter of its mouth.

**21.** The Society shall not be responsible for any accidents arising from any cause to any person when assisting or visiting the Show, or for any damage or loss, howsoever caused to the property of any such person.

**22. DAHLIA CLASSES GROUP CLASSIFICATION, FORMATION AND SIZES:**

**CACTUS:** Cactus Dahlias have fully double blooms, the ray florets are usually pointed, the majority are narrow and revolute for more than half their length.

**DECORATIVE:** Decorative Dahlias have full double blooms, showing no disc. The ray florets are broad, generally flat or slightly twisted and usually bluntly pointed.

**EXHIBITS:** An exhibit of dahlias should be arranged so that all the blooms face in the same direction, are clear of each other and staged so that a pleasant and balanced exhibit is achieved.

All blooms should be staged with some dahlia foliage, preferably on the stem. The foliage should be clean, healthy and undamaged.

It is recommended that the names of all varieties should be clearly stated.

**23. ALL CUPS AND TROPHIES TO BE RETURNED TO THE CUPS & TROPHIES SECRETARY BY 1ST JULY AND SHALL REMAIN THE PROPERTY OF THE SOCIETY.**

**24. RESTRICTED CLASSES**

Class 81 is restricted to exhibitors living within the Parish boundaries of Portishead and North Weston, Portbury, Clapton in Gordano or Weston-in-Gordano.

**25. RESTRICTIONS ON ART CLASSES**

Exhibitors in the Art Classes 407 - 412 and 443 may NOT enter more than TWO EXHIBITS IN EACH CLASS.

**26. RESTRICTIONS ON ALL CLASSES**

Exhibitors are limited to a MAXIMUM OF TWO EXHIBITS IN ANY CLASS, unless otherwise indicated.

**27. MEMBERS CLASSES**

Exhibitors in these classes must be current members of the Portishead and District Horticultural Society.

**28. DRONES**

Drones are not permitted to be used at the Show Field during the course of the Show in accordance with Air Navigation Order 2016

**29. DOGS**

Dogs are allowed on the field during the course of the Show on non extending leads, we do however ask that they are not taken into the refreshment area. Tables and chairs are available outside

**30. MOVEMENT ON FIELD**

Exhibitors, visitors and traders who have vehicles on the field must remove their vehicles from the showground when asked to do so by a steward or other official. Restrictions on vehicle movement apply whilst the Show is open to avoid collisions with members of the public.

**31. HEALTH AND SAFETY**

Exhibitors and traders are responsible for ensuring that their own exhibits comply with Health and Safety regulations. This includes adherence to the Covid-19 restrictions which may be in place at the time of the Show.



## **OPENING TIMES**

<b>MONDAY</b>	<b>9.00am - 8.00pm</b>
<b>TUESDAY</b>	<b>9.00am - 6.00pm</b>
<b>WEDNESDAY</b>	<b>9.00am - 6.00pm</b>
<b>THURSDAY</b>	<b>9.00am - 8.00pm</b>
<b>FRIDAY</b>	<b>9.00am - 6.00pm</b>
<b>SATURDAY</b>	<b>9.00am - 1.00pm</b>

**Appointment recommended with the 'nearcut'app or  
book through   @marksbarbershoppportishead**

**3 The Triangle - West Hill - Portishead  
Telephone 01275 817701**





## SPECIAL CUPS AND PRIZES

The Royal Horticultural Society's BANKSIAN MEDAL will be awarded to the exhibitor with the highest total of cash prizes in Classes 1-77.

The winners of the medal in the previous two years are not eligible this year.

**Winner 2020 Mrs Linda Hodgetts Winner 2021 Mrs Jane Pagano**

The Society's BLUE RIBBONS will be awarded for the best exhibits in each of the Horticultural Section, Fruit Section, Floral Art Arrangement and Vegetable Section. The Judge's decision is final.



## FLOWERS

THE JOHN DAWS CUP for best Novice Dahlias in Class 3.

THE H POOLE MEMORIAL PERPETUAL CHALLENGE CUP will be awarded for the best exhibit of Dahlias in the Show.

THE MILLARD ROSE BOWL will be awarded for the best exhibit in Class 6.

THE ARTHUR KNIGHT PERPETUAL CHALLENGE CUP will be awarded for the best exhibit in Class 24.

THE ALBRIGHT & WILSON PERPETUAL CHALLENGE CUP will be awarded for the best exhibit in Class 63.

THE ASG SECURITY SERVICES CHALLENGE CUP will be awarded for the best floral display of Roses in the show.

THE AP BURT PERPETUAL CHALLENGE CUP will be awarded for the best exhibit in Classes 69 and 70.

THE H E PUGSLEY PERPETUAL CHALLENGE CUP will be awarded for the best exhibit in Class 51.

THE ASG SECURITY SERVICES TROPHY will be awarded for the best exhibit in Classes 60 and 61.

### FLOWER COLLECTIONS

THE SMITH PERPETUAL CHALLENGE CUP will be awarded for the best exhibit in Class 20.

THE STONE PERPETUAL CHALLENGE CUP will be awarded for the best exhibit in Class 28.

THE BURDEN TROPHY will be awarded for the best exhibit in Class 73.

THE MARTIN JANES MEMORIAL CUP will be awarded for the best exhibit in Class 29.



## PLANTS

THE JOHN LANGDON PERPETUAL CHALLENGE CUP will be awarded for the best exhibit in Classes 154 and 155.

THE STAN COOK TROPHY will be awarded for the best exhibit in Class 157.

THE L G ROYNON MEMORIAL CUP will be awarded for the best exhibit in Classes 152 and 153.

THE A G SKYRME MEMORIAL TROPHY will be awarded to the exhibitor gaining the highest number of points in Classes 101 - 107 inclusive.

## FLOWER DISPLAYS

THE ROTARY CLUB of PORTISHEAD CUP will be awarded for the best hanging basket in Class 160.

THE ANGLIAN WINDOWS PERPETUAL CHALLENGE CUP will be awarded for the best allotment exhibit in Class 80.

THE A V HARRIS CUP will be awarded to the winner of the Blue Ribbon for the floral exhibits.

## VEGETABLES and AGRICULTURAL PRODUCE

THE POOLE MEMORIAL PERPETUAL CHALLENGE CUP will be awarded for the best exhibit of tomatoes in the Show.

THE JOHN CAREY MEMORIAL TROPHY will be awarded for the best exhibit of Beans in the Show.

THE W T H GILL PERPETUAL CHALLENGE CUP will be awarded for the best exhibit in Class 221.

THE H WILLOUGHBY LYLE MEMORIAL CUP will be awarded for the most points in the novice Vegetable Classes.

THE ARCHIE FERRIMAN CUP will be awarded for the best exhibit in Class 281.

THE MEANEY FAMILY CUP will be awarded for the most points in the Open Vegetable classes.

THE FRANK CALCRAFT MEMORIAL TROPHY will be awarded to the winner of Class 81 - "The Master Gardener of Portishead" - for full details see Class 81

THE ROLLINGS PERPETUAL CHALLENGE TROPHY for the winner of the Blue Ribbon in the Vegetable section.

## FRUIT

THE W HUNT PERPETUAL CHALLENGE TROPHY for the winner of the Blue Ribbon in the Fruit section.







## FLORAL ARRANGEMENTS

THE TOM PUGSLEY PERPETUAL CHALLENGE CUP for the best floral arrangement submitted by a novice. 311-313 inclusive

THE MRS M H PUGSLEY PERPETUAL CHALLENGE CUP will be awarded for the best exhibit in Classes 314 to 320 inclusive

THE PORTISHEAD FLORAL ART SOCIETY MODERN TROPHY will be awarded for the best exhibit in Class 316.

THE PORTISHEAD FLORAL ART SOCIETY FIGURINE TROPHY for the best exhibit in the class 311

THE BRYAN PARSONS SHIELD to the winner of the Blue Ribbon for floral exhibits in classes 312

THE ROLLASON PERPETUAL CHALLENGE TROPHY will be awarded for the most points in Classes 314 - 320 inclusive.

## CLASS POINTS COMPETITIONS ADULTS

THE W T H GILL PERPETUAL CHALLENGE CUP to the exhibitor gaining the highest number of points in the novice classes.

THE KENNETH GOBLE PERPETUAL CHALLENGE CUP to a first time Portishead Flower Show exhibitor who gains the most points.

THE PARSONS PERPETUAL CHALLENGE CUP to the exhibitor gaining the highest number of points in the members classes.

THE C J STACEY PERPETUAL CHALLENGE CUP to the exhibitor gaining the highest number of points in the Open Classes.

THE WILLIAM TRIPP PERPETUAL CHALLENGE CUP to the exhibitor winning the most first prizes in Classes 1-286.



## CLASS POINTS COMPETITIONS CHILDREN

THE S A PARKER PERPETUAL CHALLENGE CUP to the child gaining the highest number of points in Classes 470 - 481 inclusive.

THE H A BESSANT PERPETUAL CHALLENGE CUP to the child gaining the highest number of points in Classes 482 - 497 inclusive.

THE BURDEN PERPETUAL CHALLENGE CUP to the child gaining the highest number of points in Classes 500 - 513 inclusive.

THE AXA ASSURANCE SHIELD to the child gaining the highest number of points in Classes 516 - 527 inclusive.

THE PRIMARY SCHOOLS CHALLENGE CUP to the primary school whose pupils win the most points in the children's classes



Reeds Rains

· Since 1868 ·

Reeds Rains Estate Agents selling and letting homes since 1868

## Proud to support the Portishead Summer Show 2022

58 High Street, Portishead, Bristol BS20 6EL 01275 843371  
Triangle House, 5 The Triangle, Clevedon BS21 6NB 01275 872238

[www.reedsrains.co.uk](http://www.reedsrains.co.uk)





## COOKERY

THE MAJORIE WILSON SALVER for the best Victoria Sandwich in Class 379.

THE HANCOCK PERPETUAL CHALLENGE CUP for the best exhibit in Class 474.

THE HANCOCK PERPETUAL CHALLENGE CUP for the best exhibit in Class 495.

THE BARRY WALTERS BOWL for the most points in preserves classes 357 - 364 inclusive.

THE NORTH SOMERSET MERCURY PERPETUAL CHALLENGE CUP for the exhibitor gaining the highest number of points in the Cookery Classes 357 - 380 inclusive

## HANDICRAFT AND PHOTOGRAPHY

THE JESSIE FOWLER KNITTING CUP for the best knitting exhibit in the Show.

THE PHS PHOTOGRAPHY CUP to the exhibitor gaining the highest number of points in this section.

PORTISHEAD TOWN COUNCIL CUP for the best art exhibit in classes 407 - 412 and 440.

THE RECTORY CUP for the best hard material handicraft in class 401

## SENIOR CITIZENS

THE GEORGE EDWARDS PERPETUAL MEMORIAL CUP for the best senior handwriting exhibit in the Show.

THE FOTHERGILL SEED CUP for the best exhibit in Class 445.

THE LEOS PERPETUAL CHALLENGE CUP to the Senior Citizen gaining the highest number of points in classes 440 - 447 inclusive.

## TRADE EXHIBITS

THE WESTERN DAILY PRESS CHALLENGE CUP to the best non horticultural trade exhibit.

THE BETOM TROPHY for the best inside horticultural trade exhibit.

THE MARY FIELDEN CUP for the best outside horticultural trade exhibit.

THE TOWNSWOMEN'S GUILD PERPETUAL CHALLENGE CUP to the best non-trade exhibit.

### METRIC TO IMPERIAL LINEAR CONVERSIONS

25mm is equivalent to 1 inch

300mm is equivalent to 1ft



# WATKINS & TASKER

## VETERINARY GROUP

Highly Experienced Team of Local Vets

Open 7 Days a week

24 Hour Emergency Care



Nailsea 01275 858628

Portishead 01275 397449

Yatton 01934 833685

[www.watkins-tasker-vets.co.uk](http://www.watkins-tasker-vets.co.uk)

Also Available

**hydro.vet**



Rehabilitation &  
Hydrotherapy for  
your pets

01275 405905 | [info@hydro.vet](mailto:info@hydro.vet)



## SCHEDULE OF CLASSES

Guidance notes on showing are available on request. Naming your varieties is of interest to others and can be a deciding factor in cases of close competition (reg. 18. )

### SECTION 1 - CUT FLOWERS

#### BEGINNERS/NOVICE CLASSES

Special attention is drawn to regulation 11

Points competition - see page 17

Prize money in all classes £1, 60p, 40p (unless otherwise stated)

Entry fee 35p (see cups - GOBLE, MILLARD & JOHN DAWS)

### Class

- 1 Annuals (mixed or single species), one vase, antirrhinums not included.
- 2 Lavender, ten sprigs, one vase.
- 3 Dahlias, three blooms, mixed colours, any kind, one vase.
- 4 Roses, one specimen in vase.
- 5 Roses, one stem of cluster roses, one vase.
- 6 Sweet peas, seven stems, mixed varieties, own foliage optional, one vase.
- 7 Fuchsias, six mounted on a board.
- 8 Penstemons, three stems in vase.
- 9 One vase, garden flowers, one species not mentioned in Classes 1-8 (shrubs excluded).
- 10 Vase or bowl of mixed garden flowers.

### MEMBERS CLASSES

Special attention is drawn to Regulation 27

Points competition - (page 17)

Prize money in all classes £1, 60p, 40p (unless otherwise stated).

Entry fee 35p (see cups - SMITH, ARTHUR KNIGHT, STONE and MARTIN JANES)

### Class

- 20 Annuals, four kinds, four vases. Space 900 mm
- 21 Bowl of mixed dahlias shown for all round effect; bowl not to exceed 250 mm in diameter; space 750 mm.
- 22 Rose, one specimen in vase.
- 23 Roses, three specimens, one vase.
- 24 Sweet peas. 9 stems, own foliage optional, one vase.
- 25 Gladioli, three spikes, one vase.
- 26 Pansies/violas, six blooms, mixed varieties; space 300 mm square
- 27 Clematis, one flower in vase
- 28 Vase or bowl of mixed garden flowers; space 750 mm
- 29 Vase or bowl of mixed flowering shrubs- roses excluded - space 750 mm



## OPEN CLASSES

Points competition - see page 17

Prize money in all Classes £1, 60p, 40p (unless otherwise stated)

Entry fee 35p (see cups - PUGSLEY, ASG TROPHY, ALBRIGHT & WILSON, A.P. BURT, BURDEN)

### Class

- 48 Penstemon, three stems, one vase
- 49 Lavender, 10 sprigs, one vase
- 50 Bowl of mixed annuals; space 750 mm
- 51 Antirrhinums, three spikes, mixed colours, one vase
- 52 Dahlias, cactus, three blooms, one vase
- 53 Dahlias, decorative or ball, six blooms, two vases
- 54 Marigolds, nine cut flowers, any type(s), one vase
- 55 Bowl of mixed dahlias shown for all round effect; bowl not to exceed 250 mm diameter, space 750 mm
- 56 Phlox, three spikes, one vase
- 57 Gladioli, four spikes, two vases
- 58 Bowl of mixed petunias. Space 600 mm
- 59 Fuchsia, nine cut flowers, not less than three varieties mounted on a board- board not to exceed 300mm x 300mm
- 60 Border carnations, five stems in one vase
- 61 Pinks, nine stems, in one vase
- 62 Sweet peas, cream or white, nine stems, own foliage optional, one vase
- 63 Sweet peas, 5 stems of each of 3 varieties, in 3 vases, own foliage optional
- 64 Zinnias, five blooms, mixed colours, one vase
- 65 Pelargonium stems, three cut blooms in individual vases
- 66 Rose, one specimen in vase
- 67 Roses, three specimens, one vase
- 68 Roses, seven stems, no fewer than 3 varieties, one vase
- 69 Roses, one stem of cluster roses, one vase
- 70 Roses, three stems of cluster roses, mixed varieties, one vase
- 71 Scabious, perennial, one vase
- 72 Outdoor flowers, one kind excluding shrubs, not mentioned in Classes 48 to 77
- 73 Vase or bowl of mixed garden flowers; space 750 mm
- 74 A vase of everlasting flowers
- 75 Hydrangea, three heads, one vase
- 76 Buddleia, three stems, one vase
- 77 Foliage shrubs, three species, one vase

### GROUP ENTRY

Entry fee £1.00

- 80 An exhibition of vegetables and flowers by a group of members from a single local allotment site - size not to exceed 90 cm by 67 cm deep.

The Anglian Windows Cup Prizes 1st £5, 2nd £3, 3rd £2



## THE FRANK CALCRAFT MEMORIAL COMPETITION

Class 81 - See Regulation 24

Entry Fee £1.00

1st Prize £10.00 and the Frank Calcrafft Memorial Cup

2nd Prize £5.00 3rd Prize £2.50.

### This competition is for the title of: The Master (Amateur) Gardener of Portishead

The entry is to comprise:

*(a) An arrangement of two distinct kinds of flowers in 2 vases, one kind in each vase*

selected from the following:

**Sweet peas** - 10 stems any one variety or mixed

**Roses** - 5 specimens any one variety or mixed

**Dahlias** - 5 blooms any one variety or mixed

**Annuals** - 10 stems 3 kinds or more

*and (b) A collection of four kinds of vegetables selected from:*

**Beetroot** - 6

**Onion** - 5 tops off

**Broad Beans** - 10 pods

**Peas** - 10 pods

**Cauliflowers** - 2

**Potatoes** - 6 one variety

**Carrots** - 6

**Runner Beans** - 6

To be staged on a tray not more than 600 mm x 900 mm.



Each exhibit will be pointed to a maximum of twenty points, plus ten points for the general appearance of the whole exhibit.



## SECTION 2 – SPECIMEN PLANTS BEGINNERS/NOVICE CLASSES

Special attention is drawn to Regulation 11

Points Competition - see Page 17

Prize money in all classes £1, 60p, 40p (unless otherwise stated)

Entry fee 35p (see cups - A.G. SKYRME)

MAXIMUM POT SIZE IN ANY CLASS IN THIS SECTION IS 250 MM DIAMETER.

(UNLESS OTHERWISE STATED).

### Class

- 101 Orchid, one pot.
- 102 Cacti, one pot.
- 103 Pelargonium, one pot
- 104 Fuchsia, one pot.
- 105 Flowering plant  
not mentioned in any Class in this Section
- 106 Alpines, one pot
- 107 Succulents, one pot



### MEMBERS CLASSES

Special attention is drawn to Regulation 27

Points competition - see Page 17

Prize money in all Classes £1, 60p, 40p (unless otherwise stated)

Entry fee 35p

MAXIMUM POT SIZE IN ANY CLASS IN THIS SECTION IS 250 MM DIAMETER (UNLESS STATED OTHERWISE).

### Class

- 121 Fuchsia, one pot
- 122 Foliage plant, one pot
- 123 Pelargonium (geranium), one pot
- 124 Indoor flowering plant, one pot
- 125 Planted round pot, pot not to exceed  
300mm in diameter
- 126 Orchid, one pot
- 127 Lilies, one pot
- 128 Cacti, one pot







## OPEN CLASSES

Points Competition - see Page 17

Prize money in all classes £1.00, 60p, 40p (unless otherwise stated)

Entry fee 35p (see cups - L.G. ROYNON, JOHN LANGDON, STAN COOK, ROTARY)

PLEASE STATE POT SIZE IN ANY CLASS IN THIS SECTION ON THE ENTRY FORM.

### Class

- |   |  |
|---|--|
| 150 Hosta - one pot   | 160 Hanging basket (maximum basket size 360 mm)                      |
| 151 Pelargonium - two pots.                                     | 161 Hanging pot (maximum pot size 250mm)                             |
| 152 Begonias two - in separate pots                             | 162 Planted floral trough, not larger than 600 mm<br>and 225 mm wide |
| 153 Begonia fibrous - one pot                                   | 163 Flowering plants - three kinds                                   |
| 154 Fuchsia - three different varieties.                        | 164 One chilli plant   |
| 155 Fuchsia - one trained specimen.                             |  |
| 156 Flowering plant, not mentioned in any class in this section |  |
| 157 Three different cacti or succulent in separate pots         |  |
| 158 Bonsai - one container with up to three specimens           |  |
| 159 One fern  |  |



A personal, free advice & arrangement service  
for your mortgage and insurance needs

Appointments all held via video link at a time  
convenient to you

- Remortgages
- Purchases
- Residential
- Buy to Let
- Home Protection
- Insurance - for  
you and your family

Tel: 01275 849059 Mobile: 07788 418 119

Website: [www.spotonmortgages.co.uk](http://www.spotonmortgages.co.uk) Email: [ian@spotonmortgages.co.uk](mailto:ian@spotonmortgages.co.uk)

Your home may be repossessed if you do not keep up payments on a mortgage or loan secured against it.



## SECTION 3 – FRUIT

### BEGINNERS/NOVICE CLASSES

Special attention is drawn to regulation 11

Points competition - see Page 17

Prize money in all classes £1, 60p, 40p

Entry fee 35p (see cups - W Hunt)

All soft fruit to be shown with stalks and on a plate

#### Class

181 Apples, cooking or dessert, plate of four

182 Dish of fruit, minimum 100g, one kind



#### OPEN CLASSES

POINTS COMPETITION - see Page 17

Prize money in all classes £1.00, 60p, 40p

Entry fee 35p

All soft fruits to be shown on stalks

#### Class

191 Apples, cooking, plate of four

192 Apples, dessert, plate of four

193 Currants, black, 10 strings

194 Currants, red, 10 strings

195 Gooseberries, plate of 200g (approx)

196 Raspberries, plate of 100g (approx)

197 Dish of fruit, one kind, not mentioned in this section

198 Collection of fruits, three kinds



#### EGG CLASSES

Prize money in all classes £1.00, 60p, 40p Entry fee 35p

All eggs should be home produced and shown on plates with straw, sawdust or hay

#### Class

199 Four Fresh Hens Eggs - white/cream

200 Four Fresh Hens Eggs - brown

201 Four Fresh Bantam's Eggs

202 Any other Four Culinary Eggs





## SECTION 4 - VEGETABLES

Guidance notes on showing are available on request. Naming your varieties is of interest to others (see regulation 18)

### BEGINNERS/NOVICE CLASSES

Special attention is drawn to regulation 11

Points competition - see page 17

Prize money in all classes £1, 60p, 40p (unless otherwise stated)

Entry fee 35p (see cups - W.T.H. GILL, H. WILLOUGHBY LYLE)

### Class

205 Beans, broad - six pods

206 Beans, runner - six pods

207 Longest runner bean - one only - one prize

208 Peas - plate of five pods

209 Lettuce - one any variety

210 Onions - four grown from sets, tops off, and tied with plain raffia

211 Courgettes - two, not over 150mm

212 Beetroot, globe - variety, three, tops off, 75mm remaining

213 Carrots, tops off - three 75mm remaining

214 Shallots - plate of six. Shallots should be tied with plain raffia

215 Tomatoes - plate of four, calyces on

216 Tomatoes, cherry type - plate of four, calyces on

217 Tomatoes, plum type - plate of four, one variety

218 Potatoes - four, one variety

219 Heaviest potato - one only (one prize)

220 Rhubarb - three sticks, leaves trimmed to 75mm base as pulled

221 Vegetables, collection in tray or basket - three kinds only - space 750mm

£3.00 £2.00 £1.00 (at least two of each kind)

222 One misshapen vegetable

223 Potato in a Pot (2 X Foremost seed potatoes to be put in pot in March - potatoes will then be weighed at the Show on Friday 29th July - first three heaviest crops). THIS CLASS ONLY FOR CHILDREN UNDER 12 YEARS OF AGE.





# F H HALLIDAY & SON

## PORTISHEAD INDEPENDENT FUNERAL DIRECTORS



Our family is proud to be serving your families for over 140 years - Est 1880



24 hour a day, 365 days a year  
Personal and caring service

Private chapels of rest in a quiet peaceful setting, opposite St Peters Church with easy parking in our private car park

Golden Charter Pre-Paid Funeral plans available

TAILORMADE FUNERAL PLANS FROM

## F H Halliday & Son Ltd

YOUR  
FUNERAL.  
YOUR  
WAY



**Plan ahead with F H Halliday & Son Ltd, your trusted local funeral director**

When you're thinking about something as important as your funeral arrangements, it makes sense to talk directly to the experts.

As your local independent funeral director, we can help you specify your wishes, organise the send-off you want and fix the cost of our services in advance,<sup>1</sup> with a Golden Charter funeral plan.

It's a simple, thoughtful way to plan ahead, that lets you decide on all the main details, so there's no uncertainty and fewer stressful decisions for your family later on.

Funeral costs have gone up 55% in less than ten years.<sup>2</sup> Taking out a plan now will lock the funeral director's services covered by your plan at today's prices. No matter how much prices rise in the future, once your plan is paid for,<sup>3</sup> there'll be nothing more to pay for these services - guaranteed.

Golden Charter is one of the UK's largest funeral plan providers and we're proud to offer their funeral plans to our families.<sup>4</sup>



- ✓ Help save your family from the worry of funeral costs and arrangements
- ✓ Express your wishes and arrange the send-off you want
- ✓ Avoid future rises in funeral directors' costs
- ✓ A choice of plans and affordable ways to pay
- ✓ Easy to apply - with no medical questions

FUNERAL PLANS FROM  
**Golden Charter**  
Smart Planning for Later Life.



St Peters Court, 115 High Street, Portishead BS20 6PT

Telephone: 01275 842120 email: [enquiries@fhhalliday.co.uk](mailto:enquiries@fhhalliday.co.uk)

[www.fhhalliday.co.uk](http://www.fhhalliday.co.uk)



# National Vegetable Society

## Table for pointing Vegetables

Judges Score							
Kind of vegetable							Total
Aubergine	5	4	3	3	3		18
Beans, Broad	5	3	2	3	2		15
Beans, French	6	3	2	2	2		15
Beans, Runner	5	4	3	3	3		18
Beet, Globe and Cylindrical	5	3	3	2	2		15
Beet, Long	6	4	4	3	3		20
Brussel Sprouts	5	4	0	3	3		15
Cabbages	5	3	0	0	3	Solidity 4	15
Carrots, Long Pointed	6	4	3	3	4		20
Carrots, Stump Rooted	5	4	2	3	4		18
Cauliflowers	6	4	4	3	3		20
Celery, Trench	6	4	4	3	3		20
Celery, other than Trench	6	3	3	3	3		18
Courgettes	4	3	3	2	0		12
Cucumber	5	4	3	3	3		18
Leeks	6	4	3	5	2		20
Marrows	5	4	2	2	2		15
Onions, 250 grms or under	5	3	3	2	2		15
Onions, Large Exhibition	6	4	3	5	2		20
Onions, from Sets	5	3	3	2	2		15
Parsnips	6	4	4	3	3		20
Peas	6	4	0	4	2	Full Pod 4	20
Potatoes	5	5	4	3	0	Eyes 3	20
Shallots, Large Exhibitions	6	3	3	3	3		18
Shallots, Pickling (30mm)	5	4	2	2	2		15
Tomatoes	5	4	3	3	3		18
Turnips or Swede	5	4	2	2	2		15



## MEMBERS' CLASSES

Special attention is drawn to regulation 27

Points competition - see Page 17

Prize money in all classes £1, 60p, 40p (unless otherwise stated).

Entry fee 35p

### Class

226 Beans, runner - six pods

227 Longest runner bean - one only (one prize)

228 Beetroot, globe variety - three, tops off, 75mm remaining

229 Courgettes, two, not over 150 mm

230 Tomatoes, any type - plate of five, calyces on

231 Onions - five, grown from sets, tops off and tied

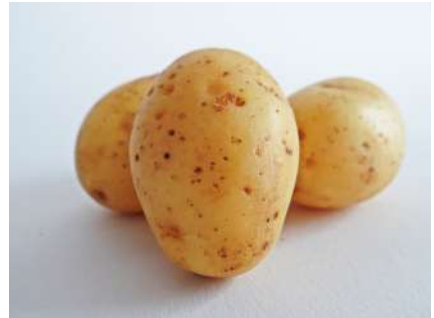
232 Shallots - plate of six. Shallots should be tied with plain raffia

233 Potatoes, white or coloured - five of one named variety

234 Heaviest collection of three potatoes (one prize)

235 Rhubarb - three sticks, leaves trimmed to 75mm base as pulled

236 Heaviest marrow or courgette (one prize)





## OPEN CLASSES

Points competition - see Page 17

Prize money in all classes £1, 60p, 40p (unless otherwise stated)

Entry fee 35p (see cups MEANEY, ARCHIE FERRIMAN)

### Class

- 253 Leeks - three, tops on
- 254 Beans - broad, six pods
- 255 Beans - dwarf, French six pods
- 256 Beans, runner - six pods
- 257 Longest green & turgid runner bean - one only (one prize)
- 258 Peas - plate of 10 pods
- 259 Carrots long - four, tops off, 75mm remaining
- 260 Carrots - four, tops off, stump rooted, 75mm remaining
- 261 Beetroot, globe variety - three, tops off - 75mm remaining
- 262 Parsnips - three, tops cut to 75mm
- 263 Courgettes - three, not over 150mm
- 264 Cucumber - two
- 265 Marrows - two, not over 300mm
- 266 Tomatoes - plate of five, calyces on
- 267 Tomatoes - cherry type - plate of five, calyces on
- 268 One truss of tomatoes
- 269 Lettuce - one of any variety
- 270 Onions - five, grown from sets, tops off and tied
- 271 Onions - four, grown from sets, tops on
- 272 Onions - four, grown from seed, tops on
- 273 Shallots - nine - to be tied with plain raffia
- 274 Shallots - 12 for pickling (to pass through a 30mm diameter ring) to be tied with plain raffia
- 275 Potatoes, white - five of one named variety
- 276 Potatoes, coloured - five of one named variety
- 277 Potatoes - collection, three varieties, three of each
- 278 Rhubarb - three sticks, leaves trimmed to 75mm base as pulled
- 279 Collection of mixed herbs, named, in a container
- 280 Any other vegetable, not in the other open vegetable classes
- 281 Vegetable collection, in tray or basket, four kinds only (at least two of each kind) space 750mm £5, £4, £3
- 282 Collection of salad vegetables - four kinds, in container 450mm square
- 283 Peas, mange tout or sugar snap - plate of 10 pods
- 284 Peppers - three - one kind (sweet or chilli)
- 285 Peppers - any colour, two
- 286 Chillies, any variety, or mixed - five



## SECTION 5 – FLORAL ARRANGEMENT

1. Classes Nos: 314 to 320 will be judged in accordance with NAFAS Competition Manual, Third Edition 2015, (further information available from the Chairman of the Portishead Floral Art Society)

NAFAS Rules state that disqualification will take place for any of the following reasons:

- Failure to comply with any specific requirements of a class as stated in a show schedule i.e. the measurements or the components.
- Inclusion of artificial plant material (unless specifically allowed by a show schedule).
- Inclusion of any fresh plant material that does not have its roots or the cut ends of its stems in water or water-retaining material.
- Exceptions: Air plants, cacti, fruits, grass turf, lichen, moss, succulents, vegetables and long-lasting plant material **which will remain turgid for the duration of a show.**

(Definition of 'turgid' - the state of firmness of plant tissue resulting from adequate moisture, causing the plant cells to be fully expanded)

2. ALL CLASSES are staged on runs of tables approximately 68.5 cm off the ground, covered in white paper. Space allowed width 75 cm x depth 67.5 cm, height limited to 120 cm, except where otherwise specified.

3. Prize money in all Classes 311 to 320 will be £2, £1, 50p unless otherwise stated.

The Floral Art class titles reflect this year's theme for the centre stand, "**The Platinum Jubilee**"

### Beginners/Novice Classes

Entry Fee 50p(see cups TOM PUGSLEY, FLORAL ART FIGURINE, PARSONS)

311 Candlelight - an exhibit 40cms wide x 35cms deep

312 Basket of Delights - an exhibit 55cms wide x 75cms deep

313 Party Time - an exhibit for a table centre 55cms wide x 75cms deep

### Open Classes

Entry Fee 50p(see cups MRS M H PUGSLEY, FLORAL ART MODERN TROPHY, ROLLASON)

314 Anniversary Waltz - a petite exhibit not exceeding 25cms wide x 25 cms deep x 37cms high

315 It's a gift - a plant and flowers exhibit to include growing plants and cut flowers - any other plant material may be added not exceeding 50cms wide x 75cms deep

316 Bust the rust - an exhibit (PFAS Contemporary Trophy) not exceeding 55cms wide x 75cms deep

317 Let's celebrate – a table exhibit (up to 2 competitors per table) some artificial plant material may be used but must not predominate. Restrained decoration of the corners and sides is permitted. Tables will be 90cms wide x 90cms deep covered in white paper within a space of 110cms square. Competitor/s to provide own table covering.

318 Platinum Jubilee – a pedestal exhibit – to be staged on the ground in a space 75cms wide x 75cms deep x height unlimited

319 Presentation – a hand tied bouquet to be displayed in a clear container 50cm wide x 50cm deep

320 Platinum, nature's silver lining - an exhibit 75cms wide x 75cms deep





# Portishead

## Summer Show

**2022 Entertainment Guide**



# **2022 Arena Programme**

## **SATURDAY 30th JULY**

- 12.00 Opening Ceremony**
- 12.00 - 5.00 Aldabra Tortoises**  
- sponsored by Portishead Pet Services
- 12.00 - 5.00 Mobile Farm**
- 12.15 Punch and Judy**
- 12.30 The Hogg Show**
- 1.00 The Chicken Teddy's**
- 1.45 Steppingstones School of Dance**
- 2.00 The Hogg Show**
- 2.30 Children's Fun Sports - Sports 4 Kids - S4K**
- 3.00 Punch and Judy**
- 3.15 Steppingstones School of Dance**
- 3.30 Children's Fancy Dress Parade**
- 3.45 The Chicken Teddy's**
- 3.45 Punch and Judy**
- 4.15 The Hogg Show**
- 5.00 Punch and Judy**
- Fun Rides - Bouncy Castle (fees apply)**





# **2022 Arena Programme**

## **Sunday 31st JULY**

- 11.00 Portishead Concert Band and Songs of Praise**
- 11.30 - 5.00 Severn Counties British & Foreign Bird Society**
- 12.00 Registration for Companion Dog Show**
- 12.00 Punch and Judy**
- 12.30 The Barnacle Bouys**
- 1.00 Companion Dog Show Competition commences**
- 1.30 Shetland Performance Display Team \***
- 2.15 Micky Finn - local Band**
- 2.15 Punch and Judy**
- 2.30 Children's Fun Sports with Sports 4 Kid - S4K**
- 3.00 Companion Dog Show - Parade of Winners**
- 3.30 Shetland Performance Display Team \***
- 4.00 Micky Finn**
- 4.15 Punch and Judy**
- 5.00 Awards Ceremony**

**Fun Rides - Bouncy Castle (fees apply)\* The Shetland Performance Display Team are raising funds for Bristol Children's Hospital Wallace and Gromit Appeal and Birmingham Children's Hospital**



# Sperrings Farm B&B

Sperrings Farm B&B is located 5 minutes from M5 jnc 19 & 9 miles from central Bristol/ 8 miles from Bristol Airport.

The self contained, barn conversions are situated on our family dairy farm in the Gordano Valley. The rooms are spacious, modern & luxurious with superking beds, wet room, kitchenette, coffee machine, TV, underfloor heating and free wifi. Local traditional pub, 5 mins walk with enjoyable country walks on the doorstep...Visit us soon.

"Great location surrounded by lovely countryside, which isn't too far away from the town, perfect. Comfy and very clean. Loved the coffee machine. Thanks."

"Very peaceful location, great to unwind after a days work. Easy parking, it had all I needed for a couple of days and very tastefully decorated. I will use again."



Sperrings Farm B&B, Moor Lane, Clapton in Gordano, BS20 7RF

Find us on Air B&B



Entertainment Schedule



## SECTION 6 - HONEY CLASSES

Entry fee 35p

Prize money £1, 60p, 40p

ALL ENTRIES: JARS MUST BE MATCHING IN EACH CLASS AND MIMIMUM 340G NET WEIGHT

### Class

337 Honey - two jars - liquid (light, medium or dark)

338 Honey - two jars - set (granulated or soft set)

339 Two matching beeswax candles displayed erect  
(candlesticks may be used if required)

340 Three 28g beeswax blocks all uniform in shape,  
presented on a flat card, show case, or plastic bag

341 One honeycomb for extraction

342 One container of cut comb approx 227g (8oz)



# EBB & FLO

PURVEYORS OF BEAUTIFUL GIFTS

A carefully curated collection  
of homewares and gifts

*Delighted to support the  
Portishead Summer Show*

01275 217069  
[www.ebbflo.uk](http://www.ebbflo.uk)

2 The Old Bakehouse, 42A High St,  
Portishead, North Somerset, BS20 6EL

# CREATIVE SOLUTIONS



Advertising | Branding | Brochures | Artwork

Friendly professional design solutions for your business.

Don't shop around... Call now for a free quotation. It won't take a minute but it will save you time!

[tracie7@live.com](mailto:tracie7@live.com)

07766 207731



@TracieFryArt



Tracie Fry Creative Solutions

For breakfast, brunch or lunch... freshly prepared and always delicious...

Homemade cakes  
and legendary scones  
barrista coffee  
licensed bar



5 The Beach Clevedon 01275 341633



## SECTION 7

# THE GREAT PORTISHEAD BAKE OFF

**Entry fee £1 - Prize money £6, £4 and £3**

The winning exhibitor will also receive a Portishead Bake Off single tiered cake stand which has been made by local Potter Olwyn KW

The Bake Off is to be judged for taste, quality and display.

Judges will award points out of ten for each item and for overall effect

To be shown on plates with the exhibitor's name on the bottom of the plate and placed in polythene bags, not cling wrap

### Class 350

**Signature Bake** - Six Biscuits - to be uniform in size and shape - own recipe

**Technical Challenge** - Two Spinach and Feta Rolls - see recipe below

**Show Stopper** - One 25cm (8") Decorated Cake - using Victoria Sponge as base - own design based on the theme of 'summer'

**Technical Challenge Recipe - kindly provided by Annette from Mokoko, Portishead**

Puff Pastry	5g fresh dill
250g fresh spinach	5g fresh oregano
50 g red onion	5g fresh mint
75g feta cheese	1/2 bunch spring onions
1 egg	1 lemon (half lemon grated)
1/2 teaspoon ground nutmeg	Black and white sesame seeds

- Finely dice red onion and cook until soft, add washed spinach until wilted, allow to cool
- Add chopped spring onion, herbs, crumbled feta and half grated rind of lemon
- Beat egg, add half to mix
- Roll pastry into long rectangle, place filling down middle, brush edge with egg then seal
- to form a sausage roll and cut into 10cm rolls
- Brush all over with egg then sprinkle with sesame seeds
- Bake in 180 oven for 35 mins

# SPERRINGS COUNTRY HUB

*Coming soon...*

## Farm Shop & Cafe

### The Country Cabin

#### Gift Shop

Country and coastal,  
homeware and gifts

### Saturday Markets

Last Saturday of each month:  
fresh local produce, arts and  
crafts, food and drink

### Equestrian Centre

Events including dressage,  
flatwork and jumping clinics or  
just hire the arena

Including

### Family Dog Show

Rosettes and prizes to be won!  
(check online for dates)

### Christmas Market

November 25-27th

Huge marquee offering a one-stop shop for all your Christmas shopping

*Ample free parking - All welcome*

[www.sperringsfairs.co.uk](http://www.sperringsfairs.co.uk)



Sperrings Country Hub, Moor Lane, Clapton-in-Gordano, Portishead BS20 7RF

Tel:07772 779317 or email [info@sperringequestrian.co.uk](mailto:info@sperringequestrian.co.uk)





## SECTION 8 – COOKERY CLASSES

Entry fee 35p

Prize money £1, 60p,40p

Cookery to be shown on plates with the exhibitor's name on the bottom of the plate and placed in polythene bags, not cling wrap

Preserve to be in clean, clear glass plain jars, approx sizes given below with label to name the preserve and give date of making

**USE NEW CLEAN/RUST FREE SCREWTOPS OR WAX DISCS WITH CELLOPHANE TOPS**

Approx 450 gram jar except where stated.

No trade names on jars or covers

Ingredients must be stated for preserves- see regulation 9

\* SEE RECIPE SECTION AT THE BACK OF THE PROGRAMME SCHEDULE

(see cups MARJORIE WILSON, BARRY WALTERS, NORTH SOMERSET MERCURY)

### Class

357 Chutney -

**no wax discs, only new metal screw-tops**

358 Raspberry jam

359 Blackcurrant jam

360 Strawberry jam

361 Jam, two kinds except those mentioned in other classes

362 Fruit jelly

363 Marmalade

364 Lemon curd - one 225g jar

365 Four fruit scones

366 A homemade loaf of brown bread

367 Four homemade white bread rolls

368 An artisan loaf

369 A ploughman's lunch

370 Four cheese scones - own recipe

371 Four rock cakes - own recipe

372 Men only fruit cake made from recipe\*

373 Cup cakes, four, decorated

374 A coffee sandwich - made from the recipe \*

375 Round of shortbread, cut into equal pieces, made from the recipe \*

376 Fruit and nut loaf - made from the recipe \*

377 Cherry cake - made from the recipe \*

378 Fruit cake - made from the recipe \*

379 Victoria Sandwich - made from the recipe \* but using own method

380 Lemon Cake - made from the recipe \*

\* recipes on pages 55,56 & 57



## SECTION 9 - HANDICRAFTS

Entry fee 35p. Prize money £1, 60p, 40p (see cups JESSIE FOWLER)

Special attention is drawn to regulation 9.

No exhibit should exceed 600mm x 600mm table space unless stated otherwise.

All exhibits must be new and unwashed (where applicable).

PLEASE PROVIDE A CLEAR PLASTIC BAG IF YOU WANT YOUR EXHIBIT PROTECTED

### Class

- |   |  |
|---|--|
| 389 A length of bunting (min 2 metres)  | - size not exceeding 90cm x 60cm including frame, if any   |
| 390 An item of paper craft  |  |
| 391 A single toy or doll in any soft material medium                                      | 397 A fabric doorstep  |
| 392 Any hand-knitted article of clothing, not over four-ply.                              | 398 An example of patchwork or quilting  |
| 393 Any article in crochet  | 399 Any dressmaking article made by the exhibitor  |
| 394 Any knitted garment in double knitting or thicker yarn (not a set)                    | 400 A handmade card for "Anniversary"  |
| 395 Any mainly soft article not covered by any other class in this section                | 401 Any mainly hard article not covered by any other class in this section   |
| 396 An example of canvas work, including Aida and Evenweave, cross stitch, counted thread | 402 An item of felting   |
|   | 403 A gift wrapped box (max 30cm x 20cm x 20cm)  |
|   | 404 Original limerick "Sport" -to be handed in by 7pm on the MONDAY before the Show with name and class number on the back |

**hughes**  
carpentry

Domestic & Commercial  
Carpenters

For a quote call us on  
**01275 844899**

[info@hughescarpentry.co.uk](mailto:info@hughescarpentry.co.uk)





## SECTION 10 - ART CLASSES

Entry fee 35p Prize money £1, 60p, 40p (see cup PORTISHEAD TOWN COUNCIL)

Artwork must be prepared for hanging and not exceed 60cm x60cm

Entrants are limited to a maximum of 2 exhibits per class

### Class

407 Original drawing, charcoal or pencil - "Any Subject"

408 Original painting, oil or acrylic - "Any Subject"

409 Original watercolour- "Landscape or Waterscape"

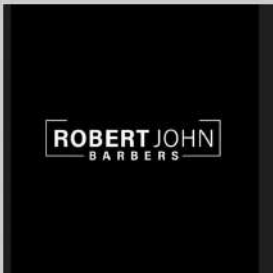
410 Original painting, any medium - "Predominantly Flowers"

411 Original drawing, pen & wash- "Any Subject"

412 Original art, mixed media - "Anything Goes"

Please state medium used beside the exhibit when staging

See also Class 440 - Section 13 Senior Citizens



E: [appointments@robertjohn.co.uk](mailto:appointments@robertjohn.co.uk)

W: [www.robertjohnhair.co.uk](http://www.robertjohnhair.co.uk)

T: 01275 842177



# VALE VETS

24 HOUR CARE

We're always here  
for poorly pets!

- Weekday opening 8.00am – 7.30pm
- Appointments 7 days a week
- 24 hour hospital & emergency care
- Pet food, accessories, preventative treatments and more
- Barks & Bubbles dog grooming on site

01275 847400



[www.portisheadvets.co.uk](http://www.portisheadvets.co.uk)

## Flagship Boutique

womenswear

Ivan and Stephanie  
look forward to welcoming you

Lots of Gift Ideas

Summer Collection Now In



Cath Kidston®

Mistral

SEASALT  
CORNWALL

weird fish  
wear the weekend

ROBELL

Joules  
EST. 1987

52 High Street, Portishead, Bristol, BS20 6EL Tel: 01275 843061  
[www.flagshipboutique.co.uk](http://www.flagshipboutique.co.uk) **FREE UK DELIVERY**





## SECTION 11 - GROUP ENTRIES

Entry Fee for Classes 421, 422 & 423 £1

Prize money £10, £8, £5, £3

\* SEE RECIPE SECTION AT THE BACK OF THE PROGRAMME SCHEDULE

### Class

#### 421 A FAMILY AFFAIR

This exhibit is to test the skills of a family in a space not exceeding 1.2m length and 76 cm (width of table). It is to be judged for quality and display, judges will award points out of ten for each item and for overall effect and the winner is the exhibitor with the highest number of points. The exhibit will consist of FIVE from the following **(you must indicate which five on the entry form):**

- (a) Pot Plant
- (b)\* Fruit Cake or Victoria Sandwich \*see recipes
- (c) A container of mixed garden flowers
- (d) Three potatoes
- (e) Six runner beans
- (f) Three beetroot, round or oval
- (g) An item of handicraft or art



#### 422 GETTING TOGETHER

This exhibit is to test the skills of a group (not family) or organisation in a space not exceeding 1.2m length and 76 cm (width of table). It is to be judged for quality and display. Judges will award points out of 10 for each item and for overall effect and the winner is the group with the highest number of points. The exhibit will consist of FIVE from the following **(you must indicate which five on the entry form):**

- (a) \* Victoria Sandwich or Fruit Cake - see recipes
- (b) A handmade article made from a soft material (excluding knitting)
- (c) Floral arrangement not to exceed 500mm
- (d) A Greetings Card
- (e) A painting of local interest
- (f) A jar of jam or chutney (with recipe)
- (g) A knitted article



## SECTION 12 - PHOTOGRAPHY

This class is for amateur photographers (defined as photographers who do not sell their photographs)

Entry fee 50p per photograph. Prize money £2, £1.50, £1 (see cups PHS PHOTOGRAPHY)

Special attention is drawn to Regulations 8 and 26

All photographic entries must be in an envelope (just one envelope per exhibitor) with your name, address and class(es) number(s) and be HANDED IN BEFORE 7pm ON THE MONDAY preceding the Show. The back of each photograph should also carry a self-adhesive label with your name and class number.

Entries must NOT have been PREVIOUSLY SHOWN at the Portishead Flower Show.

Entries may be either conventional or digital photography.

Entries are RESTRICTED to a maximum of TWO per class per entrant.

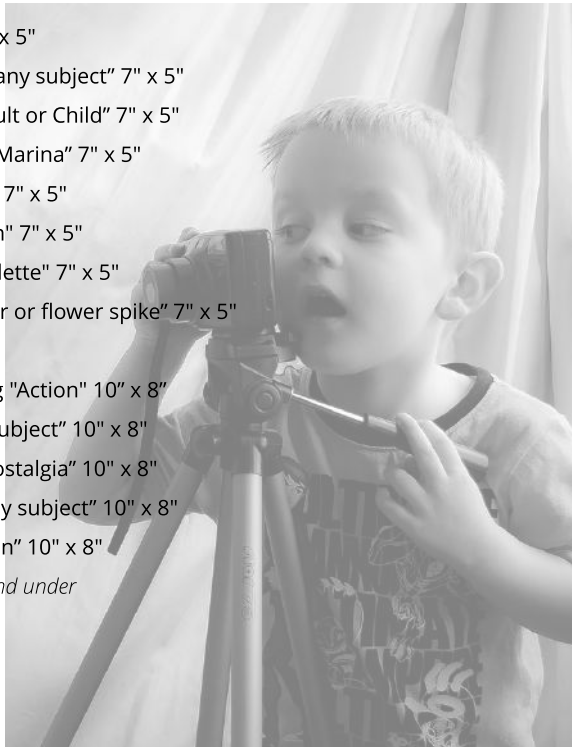
Exhibits to be UNMOUNTED 7" x 5" (18 x 13cm) or 10" x 8" (25 x 20 cm) as stated.

A cup will be awarded to the exhibitor with the most overall points for classes 425-438.

### Class

- 425 A colour print, of "Animal or Bird" 7" x 5"
- 426 A colour print, depicting "Close-up - any subject" 7" x 5"
- 427 A colour print of a "Portrait of an Adult or Child" 7" x 5"
- 428 A colour print depicting "A view of a Marina" 7" x 5"
- 429 A colour print depicting "Landscape" 7" x 5"
- 430 A colour print depicting "On the farm" 7" x 5"
- 431 A colour print depicting "Nature's Palette" 7" x 5"
- 432 A colour print of an "Individual flower or flower spike" 7" x 5"
- 433 A colour print of a "Splash" 7" x 5"
- 434 A colour print enlargement depicting "Action" 10" x 8"
- 435 A colour print enlargement of "Any subject" 10" x 8"
- 436 A monochrome or toned print of "Nostalgia" 10" x 8"
- 437 A monochrome or toned print of "Any subject" 10" x 8"
- 438 A colour print depicting "After the rain" 10" x 8"

*See also 473 - Children's class for 16 years and under*





## SECTION 13 – SENIOR CITIZENS

A 'Senior Citizen' is anyone 60 or over at the start of the show.

Points Competition - SEE PAGE 17

Prize money in all classes £1, 60p, 40p

Entry fee 35p (see cups - LEOS, GEO EDWARDS, FOTHERGILL)

### Class

440 Original painting, any medium, "any subject" - artwork must be prepared for hanging and not exceed 60cm x 60cm. Entrants are limited to a maximum of two exhibits

441 One pot plant, flowering, pot size 250mm max

442 A miniature garden in a container – max size tray 370 mm x 230mm

443 Rose - one specimen in vase

444 A vase or bowl of mixed garden flowers - space 450mm max

445 A collection of vegetables, four varieties (two of each) - space 450mm x 600mm

446 An example of your handwriting "free choice of text" - A4 max size \*\*

447 Original poem, (own composition) subject "Our Queen" - 16 lines maximum \*\*

The poem should have name and address on the reverse

**\*\* Handwriting 446 and Poem 447 entries must be handed in by 7pm on the MONDAY PRIOR TO THE SHOW with name and address and class number on the back**



Multidisciplinary centre helping you to achieve optimum health

### Therapies

Osteopathy, Cranial Osteopathy, Physiotherapy, Acupuncture, Shockwave Therapy, Sports Therapy Massage, Holistic Massage, Psychotherapy, Homeopathy, Baby Head Moulding, Custom Orthotics, Holistic Core Restore, Ear Wax Removal and Hearing Tests.

### Classes

Pilates: mat, equipment, physio-led seated and rehab.

**Walnut Grove, Slade Road, Portishead BS20 6BB. Tel: 01275 818303**  
**www.walnutgroveclinic.com @walnutgroveclinic**





## **Richwood Construction**

**James Hailwood: 07799 821652**

Project start to finish | Extensions | Conversions | Patios | Painting |  
Bricklaying | Driveways | Plastering | Knock throughs | Open plan  
Pile Foundation Specialist



## **Richwood Roofing**

**Paul Richards: 07896 242169**

Roof repairs | New roofs | Tiles and Slates | Fascias and Soffits  
Fibreglass roofing | Velux installation | Chimneys | Leadwork | Guttering |  
No job too small | Emergency repairs | Insurance work  
24 hour call out | Over 30 years experience



## **Richwood Electrical**

**Rob Goddard: 07864 805644**

Domestic and Commercial | From extra sockets to full rewire | TV wall mounts |  
Extra telephone points | Fault finding | Landlord electrical  
safety checks



## **Richwood Plumbing & Heating**

**Darcy Hart: 07782 171961**

Heating system installation and repairs  
Boiler servicing and repairs | Bathrooms | Underfloor heating | Unvented hot  
water cylinders | Landlord gas safety checks | Installation of gas cookers  
and fires | Solar installations

**Building on experience, working on reputation. We strive to give the  
best local service around, with competitive rates and producing the  
best workmanship.**

**Call or email for a FREE no obligation quotation**

**[www.richwoodconstruction.co.uk](http://www.richwoodconstruction.co.uk)  
[richwoodconstruction@hotmail.co.uk](mailto:richwoodconstruction@hotmail.co.uk)**







## SECTION 14 – CHILDREN'S CLASSES

All children's ages are based on their age on the first day of the show.  
All exhibits must be the exclusive work of the child although guidance may be given.  
Be careful to keep within the sizes stated in the schedule for each class.

### 16-years-old and under

Items of cookery to be placed in clear polythene bags ,not cling film, on a plate.

Prize money in all classes £1, 60p, 40p (unless otherwise stated).

Entry fee 20p (see cups – S A PARKER, HANCOCK)

#### Class

470 A garden flower arrangement - max space 45cm

471 A piece of handmade jewellery

472 Anything you like - You made it, lets see it - max size 1 metre

473 A photographic print, UNMOUNTED 7"x5" (18 x 13cm), "Any subject" (max number of entries 2)

474 Victoria sandwich - see recipe section

477 Cup cakes, four iced - own recipe

\*\* Photograph 473 must be handed in by 7pm on MONDAY PRIOR TO THE SHOW in an envelope marked with name and address

NB The back of each photograph should have a sticky label attached with name/class number and be put in an envelope.





## 12-years-old and under

Items of cookery to be placed in clear polythene bags (not cling film) on a plate.

Prize money in all classes £1, 60p, 40p (unless otherwise stated).

Entry fee 20p (see cups - HA BESSANT, HANCOCK)

### Class

- 482 Floating flowers arranged in a bowl - max container size 25cm diameter
- 483 Miniature garden in saucer (using mostly natural materials)
- 484 A flower arrangement
- 485 A landscape garden in a standard seed tray (37cm x 23cm approx)
- 486 A skateboard made from recycled materials - max 300mm long
- 487 A small bug hotel - base 15cm x 15 cm
- 488 Decorate a jam jar to make a tea light lantern
- 489 An illustrated capital letter - max A4
- 490 A handmade length of bunting, any material - max 1 metre - no kits
- 491 A pot of flowers made from any medium
- 492 Make an animal/insect using wool pompoms
- 493 Model made of Lego - own design max 45cm x 45 cm - no kits
- 494 A pizza
- 495 Four flapjacks -own recipe
- 496 Four decorated cupcakes - own recipe





## 9-years-old and under

Items of cookery to be placed in clear polythene bags not cling film on a plate.

Prize money in all classes £1, 60p, 40p (unless otherwise stated).

Be careful to follow the schedule detail, especially the sizes.

Entry fee 20p (see cups - BURDEN, JOHN HILL)

### Class

- 500 A miniature arrangement of flowers, max 10cm in any direction
- 501 A miniature garden in a saucer (mainly natural materials)
- 502 A landscape garden in a standard seed tray (37cm x 23cm approx)
- 503 Mustard or cress grown by the exhibitor
- 504 A model made from a construction kit/set (not Lego) maximum 45cm x 45cm - own design
- 505 A model made from Lego, maximum 45cm x 45cm (no kits)
- 506 Design and make The Queen mask
- 507 Create a bench from lolly sticks
- 508 A drawing of "The Queen" - size A4
- 509 Make a creature made from pine cones
- 510 Make 3 flowers from tissue paper and display in a "vase" made from toilet roll tube
- 511 An original poem - subject "My Town" - 16 lines maximum on A4 -  
NOTE this must be handed in by 7pm on the MONDAY PRIOR TO THE SHOW  
with the name and address on the reverse
- 512 Four decorated cup cakes - own recipe
- 513 Four Krispie cakes - own recipe

## 6-years-old and under

The entry must be exclusively the work of the child although adult guidance may be given.

Items of cookery to be placed in clear polythene bags not cling film on a plate.

Prize money in all classes £1, 60p, 40p (unless otherwise stated).

Entry fee 20p (see cups - AXA ASSURANCE)

### Class

- |  |  |
|--|--|
| 516 Miniature garden in a saucer<br>(using mostly natural materials)   | 522 A potato print of a flower max - size A4                   |
| 517 Mustard or cress grown by the exhibitor                            | 523 A decorated wooden spoon                                   |
| 518 A collection of garden flowers in any container                    | 524 A play dough cake on a paper plate                         |
| 519 An A4 picture using stickers                                       | 525 Draw and colour a picture of a "A House" -<br>max size A4  |
| 520 An insect made from egg boxes                                      | 526 Design a bookmark  |
| 521 Model made from Lego (must be own design)<br>- maximum 45cm x 45cm | 527 Three decorated biscuits, on a plate in a<br>polythene bag |



## Pre-school and under

The entry must be exclusively the work of the child although adult guidance may be given.

Items of cookery to be placed in clear polythene bags (not cling film) on a plate.

Prize money £1, 60p, 40p

Entry Fee 20p

### Class

528 Mustard or cress grown by the exhibitor

529 "My treasures from the world of nature" exhibited in an ice cream container

530 An A4 picture using stickers - max size A4

531 A leaf collage

532 Three decorated biscuits



## PORTISHEAD YOUTH CENTRE

A community centre by day and a youth centre by night!

Pre-natal support - Pre-school groups and activities  
- Youth Club sessions - Community Café - Room hire  
and parties - Senior Citizen sessions - Fitness classes  
- Information, advice and support

Visit [www.portisheadyouthcentre.co.uk](http://www.portisheadyouthcentre.co.uk)  
or call 01275 842461 for more  
information



**Free local delivery**  
**Free assembly of your new bed**  
**Disposal of your old bed**

**Come and see the wide range  
of stock we have available for  
immediate delivery**

Mon-Fri 10am-4pm Sat 11am-4pm

01275 271271

[www.portisbeds.co.uk](http://www.portisbeds.co.uk)

Unit 13 Old Mill Road, Portishead BS20 7BX





## ON THE FIELD

### CLASS 600

#### Scarecrow / Dressed Mannequin(s) Competition

For groups or individuals - families or organisations

Make a scarecrow using old clothes, hats, gloves, tights, string or any recycled materials, etc.

Exhibits may be part pre-assembled

Must be displayed in position by the Show official opening time 12 noon Saturday

Up to 8 standing frames for support will be available, but exhibits may be displayed other than standing

**Props are allowed, even encouraged**

Entry fee £1

Prize money: £6.00, £4.00, £3.00

Judging will be by the Show opener

### FANCY DRESS COMPETITION

#### Cup sponsored by Evolve Dentistry

We are hosting a fancy dress competition for children in school year 6 and below on Saturday 30th July.

No entry form required, just turn up on the day.

Parade in the main arena on Saturday 30th July at 2pm, with winner to be announced later on the same day at a time to be announced.





# CAREYS

01275 398930 · [www.careysportishead.co.uk](http://www.careysportishead.co.uk)

HOME  
GARDEN  
DIY

- Timber • Fencing and Paving
- Aggregates • Paints • Garden Products
- Housewares • Haberdashery
- Picture Framing • Arts and Crafts
- Wool • Models • Calor Gas Agents

Building and DIY materials delivered to your door

\* delivery charges from £3

17 High Street, Portishead • Tel. 01275 398930

## SIMON COSNETT

### Professional Stone Mason

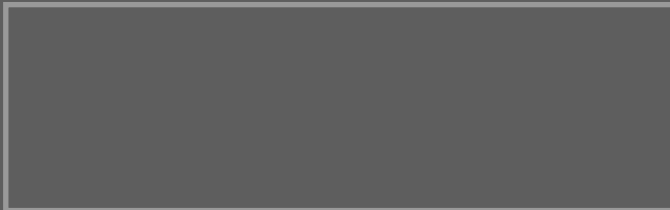


Conservation specialist with more than 35 years experience.

Bespoke creations.

First class repairs and restoration. Extensive portfolio available.

Advice and information provided with no obligation.



Call Simon on 01275 848189

# RECIPE

## COFFEE SANDWICH

Class 374

### Ingredients

175g (6oz) soft margarine  
175g (6oz) soft light brown sugar  
175g (6oz) self-raising flour  
1/2 tsp baking powder  
3 eggs  
2 tsp instant coffee dissolved in  
1 tablespoon boiling water  
Walnut pieces to decorate  
18cm (7") or 20cm (8") round tins

### Method

Pre-heat oven to 180C/gas mark 4. Grease and flour cake tins. Place margarine and sugar in bowl. Sift flour and baking powder together and add to the bowl with the eggs. Whisk the ingredients together. Add dissolved coffee and beat in to incorporate. Bake for 25 minutes until sponges are risen.

### Buttercream Filling

40g (1½ oz) butter - softened  
80g (3oz) icing sugar  
1 tsp instant coffee dissolved in  
2 tsp boiling water

Beat butter until smooth. Gradually beat in icing sugar and then dissolved coffee. Sandwich between the two sponges

### Coffee glaze icing:

115g (4 oz) icing sugar, sifted  
1½ tsp instant coffee dissolved in 1  
tablespoon boiling water

Sift icing sugar into bowl and gradually mix in enough dissolved coffee to give a smooth consistency. Spoon over top of cake and decorate with walnut pieces. .

# RECIPE

## SHORTBREAD - Class 377

### Ingredients

250 g (10oz) unsalted butter  
250 g (10oz) plain flour  
125g (5oz) caster sugar  
125g (5ozs) cornflour

### Method

Pre-heat oven to 150C/gas mark 2. Grease tin. Cream butter and sugar, add sifted flour and cornflour and mix to smooth dough. Press into tin and prick all over with a fork. Bake for one hour until lightly golden. While still warm sprinkle with caster sugar and leave to cool.

# RECIPE

## FRUIT AND NUT LOAF Class 376

### Ingredients

100g (4oz) cooking margarine  
50g (2oz) glace cherries  
25g (1oz) chopped walnuts  
175g (6oz) dried mixed fruit  
4 ripe bananas, mashed  
225g (8oz) self raising flour  
175g (6oz) caster sugar  
2 eggs

### Method

Preheat oven to 170C, gas mark 3. Lightly grease a loaf tin. Mix all of the ingredients together in a large bowl until well mixed. Pour into loaf tin and bake in preheated oven until skewer inserted into the bread comes out clean - approx 1 ¾ to 2 hours.

# RECIPE

## CHERRY CAKE Class 377

### Ingredients

300g (12ozs) self raising flour  
3 eggs  
1/4 teaspoon salt  
100g (4oz) glace cherries  
150g (6oz) margarine  
Milk to mix  
150g (6oz) sugar  
Vanilla essence

### Method

Sieve the flour and salt and rub in the fat. Add sugar, cherries and vanilla essence.

Add the lightly beaten eggs and enough milk to give a dropping consistency. Put the mixture into a greased 7" (18cm) or 8"(20cm) cake tin and bake at 185C/gas 4 for 1 hour.

# RECIPE

## FRUIT CAKE - Classes 373, 380, 421, and 422

### Ingredients

200g (8oz) self raising flour  
6 chopped cherries  
125g (5oz) margarine  
2 eggs  
125g (5oz) caster sugar  
4 tablespoons milk  
150g (6oz) mixed fruit and peel  
18cm (7") or 20cm (8") round tin

### Method

Cream fat and sugar, add eggs and flour, beat well. Add milk and finally fruit, mix well. Turn into greased and lined cake tin.

Bake at 170C/ Gas 3



# RECIPE

## VICTORIA SANDWICH Classes

379,421,422 and 478

### Ingredients

150g (6oz) margarine or soft butter

150g (6oz) caster sugar

3 eggs

1/2 tsp baking powder

150g (6oz) self raising flour

Jam filling

7" (18cm) or 8" (20cm) round tins

Dusted with caster sugar only

Use own method.

# RECIPE

## Lemon Cake Class 380

### Ingredients

175g (6oz) self raising flour

175g (6oz) caster sugar

175g (6oz) butter

5 tablespoons milk

2 eggs

Large lemon

Topping:

75g (3oz) caster sugar and

juice from lemon

### Method

Pre heat oven to 180c/Gas Mark 4

Lightly grease a loaf tin. Put flour, sugar, butter, milk, eggs and grated lemon rind into a large bowl and mix well. Pour into loaf tin and bake in pre-heated oven for 40-50 minutes until golden and well risen.

## Butter cream filling

### Ingredients

40g (1 1/2 oz) butter, softened

80g (3 oz) icing sugar

30ml lemon juice

1 teaspoon lemon zest

### Method

Beat butter until smooth.

Gradually beat in icing sugar, lemon juice and zest

Sandwich between the two sponges



You dont have to be a master gardener to enter!

If you have any concerns about how to show your produce for the best effect, particularly the vegetables and flowers, you can find comprehensive hints and tips on our website.

[www.portisheadsummershow.com](http://www.portisheadsummershow.com) - Home page - Before the Show

[http//portisheadsummershow.com/music-entertainment-refreshments-dog-show-and-lots-more/show-arrangements/](http://portisheadsummershow.com/music-entertainment-refreshments-dog-show-and-lots-more/show-arrangements/)



# Tudor Garage

Portishead Ltd

Pleased to be supporting the  
Portishead Summer Show 2022

**MOT's Tyres and Exhaustes Batteries Brakes Air Con Service**  
**Four Wheel Laser Alignment Engine Diagnostics**  
**Clutch replacement Cambelts**

Your local friendly family business for five generations.  
Quality service at a fair price!

51 High Street | Portishead Telephone: 01275 842374  
Mon - Fri 8am - 5.15pm



# ENTRY FORMS

## PORTISHEAD SUMMER SHOW



Exhibitor No .....

This form to be filled in by the Exhibitor and handed in on the following dates :

Saturday 23rd July - The Folk Hall (side entrance) between 10am and 3pm

OR to the office on the Flower Show Field, Clevedon Road, Portishead BS20 7RA,  
between the hours of 10am- 12pm.

Monday 25th July or Tuesday 26th July - to the office on the Flower Show Field, Clevedon Road, Portishead,  
between the hours of 10am- 7pm

OR BY POSTAL ENTRY to Mrs Elaine Hall, 27 Falcon Close, Portishead, BS20 6UT NO later than 7pm the TUESDAY  
BEFORE THE SHOW. PLEASE DO NOT SEND CASH IN THE POST. If posted, entry fee is to be paid in cash (correct  
amount) when collecting class cards to stage exhibits.

### LATE ENTRIES NOT ACCEPTED.

ALL PHOTOGRAPHY, POEM and HANDWRITING EXHIBITS must be handed in with their respective  
entry forms by 7pm the MONDAY BEFORE THE SHOW.

I have read the regulations governing the Show given in the schedule and I agree to abide by them and not to  
remove any exhibit before the declared time of 5.30 pm on the Sunday of the Show. Check STAGING TIMES and  
CLASS CARDS on page 11 of the schedule.

Signed.....

School (for all children under 16).....

If a member of W.I/Youth Organisation please specify which  
.....

### NOTE: SEPARATE ENTRY FORM REQUIRED FOR EACH EXHIBITOR

PLEASE USE ONE FORM FOR ALL PHOTOGRAPHS AND ONE FORM FOR OTHER CLASSES

FULL NAME .....AGE (if under 16) .....

ADDRESS .....

TEL NO .....

EMAIL .....

(Please provide this ONLY if you are happy for the Portishead Summer Show to contact you via email  
specifically about the Show - this information will not be disclosed to any other party)

I enclose.....as entrance fees for classes overleaf.

Are you a first time exhibitor YES /NO (please circle).

TOTAL PRIZE MONEY £ .....

# PLEASE READ INSTRUCTIONS OVERLEAF

If entering more than ONE exhibit in any class please show on a separate entry line.

All **PHOTOGRAPHIC ENTRIES** on a **SEPARATE** sheet please.

Name: .....(in CAPITALS)

Exhibitors no: (office use only)

## FOR OFFICIAL USE ONLY

Class	Class Description	Entry Fee	Award	Prize Money

# ENTRY FORMS

## PORTISHEAD SUMMER SHOW



Exhibitor No. ....

This form to be filled in by the Exhibitor and handed in on the following dates :

Saturday 23rd July - The Folk Hall (side entrance) between 10am and 3pm

OR to the office on the Flower Show Field, Clevedon Road, Portishead BS20 7RA,  
between the hours of 10am- 12pm.

Monday 25th July or Tuesday 26th July - to the office on the Flower Show Field, Clevedon Road, Portishead,  
between the hours of 10am- 7pm

OR BY POSTAL ENTRY to Mrs Elaine Hall, 27 Falcon Close, Portishead, B3S20 6UT NO later than 7pm the TUESDAY BEFORE THE SHOW. PLEASE DO NOT SEND CASH IN THE POST. If posted, entry fee is to be paid in cash (correct amount) when collecting class cards to stage exhibits.

### LATE ENTRIES NOT ACCEPTED.

ALL PHOTOGRAPHY, POEM and HANDWRITING EXHIBITS must be handed in with their respective entry forms by 7pm the MONDAY BEFORE THE SHOW.

I have read the regulations governing the Show given in the schedule and I agree to abide by them and not to remove **any exhibit before the declared time of 5.30 pm on the Sunday** of the Show. Check STAGING TIMES and CLASS CARDS on page 11 of the schedule.

Signed.....

School (for all children under 16).....

If a member of W.I./Youth Organisation please specify which

.....

**NOTE: SEPARATE ENTRY FORM REQUIRED FOR EACH EXHIBITOR**

PLEASE USE ONE FORM FOR ALL PHOTOGRAPHS AND ONE FORM FOR OTHER CLASSES

FULL NAME .....AGE (if under 16) .....

ADDRESS .....

.....

TEL NO .....

EMAIL .....

(Please provide this ONLY if you are happy for the Portishead Summer Show to contact you via email specifically about the Show - this information will not be disclosed to any other party)

I enclose.....as entrance fees for classes overleaf.

Are you a first time exhibitor YES /NO (please circle).

TOTAL PRIZE MONEY £ .....

# PLEASE READ INSTRUCTIONS OVERLEAF

If entering more than ONE exhibit in any class please show on a separate entry line.  
All **PHOTOGRAPHIC ENTRIES** on a **SEPARATE** sheet please.

Name: .....(in CAPITALS)

Exhibitors no: (office use only)

**FOR OFFICIAL USE ONLY**

Class	Class Description	Entry Fee	Award	Prize Money

# ENTRY FORMS

## PORTISHEAD SUMMER SHOW



Exhibitor No. ....

This form to be filled in by the Exhibitor and handed in on the following dates :

Saturday 23rd July - The Folk Hall (side entrance) between 10am and 3pm

OR to the office on the Flower Show Field, Clevedon Road, Portishead BS20 7RA,  
between the hours of 10am- 12pm.

Monday 25th July or Tuesday 26th July - to the office on the Flower Show Field, Clevedon Road, Portishead,  
between the hours of 10am- 7pm

OR BY POSTAL ENTRY to Mrs Elaine Hall, 27 Falcon Close, Portishead, B3520 6UT NO later than 7pm the TUESDAY BEFORE THE SHOW. PLEASE DO NOT SEND CASH IN THE POST. If posted, entry fee is to be paid in cash (correct amount) when collecting class cards to stage exhibits.

### LATE ENTRIES NOT ACCEPTED.

ALL PHOTOGRAPHY, POEM and HANDWRITING EXHIBITS must be handed in with their respective entry forms by 7pm the MONDAY BEFORE THE SHOW.

I have read the regulations governing the Show given in the schedule and I agree to abide by them and not to remove **any exhibit before the declared time of 5.30 pm on the Sunday** of the Show. Check STAGING TIMES and CLASS CARDS on page 11 of the schedule.

Signed.....

School (for all children under 16).....

If a member of W.I./Youth Organisation please specify which  
.....

### NOTE: SEPARATE ENTRY FORM REQUIRED FOR EACH EXHIBITOR

PLEASE USE ONE FORM FOR ALL PHOTOGRAPHS AND ONE FORM FOR OTHER CLASSES

FULL NAME .....AGE (if under 16) .....

ADDRESS .....

TEL NO .....

EMAIL .....

(Please provide this ONLY if you are happy for the Portishead Summer Show to contact you via email specifically about the Show - this information will not be disclosed to any other party)

I enclose.....as entrance fees for classes overleaf.

Are you a first time exhibitor YES /NO (please circle).

TOTAL PRIZE MONEY £ .....

**PLEASE READ INSTRUCTIONS OVERLEAF**

If entering more than ONE exhibit in any class please show on a separate entry line.

All **PHOTOGRAPHIC ENTRIES** on a **SEPARATE** sheet please.

Name: .....(in CAPITALS)

Exhibitors no: (office use only)

**FOR OFFICIAL USE ONLY**

Class	Class Description	Entry Fee	Award	Prize Money





## Portishead & District Horticultural Society

Meetings are held at The Folk Hall, High Street, Portishead at 7.30 pm Open to members and guests (fee of £3.00 for guests).

12 April - Planting up Seasonal Containers with Karen Beasley

10 May - Year Round Vegetable Growing - Sally Nex

14 June - Fuschia's My Way - Derek Dexter

12 July - A guided tour of The Downs School Gardens with the Head Gardener, Jamie Caper

9 August - David Austin Roses - a New Style of Rose - Mervyn Reed

14 September - The Great Glasshouse at Wisley - Nick Morgan, RHS Master of Horticulture

11 October Annual General Meeting & Social  
8 November - The Trials and Tribulations of Working in Africa - Jenny Bowen



## Portishead Summer Show

If you don't have a go we wont have a show!

Why not enter one of the classes at the  
Portishead Summer Show 2022

We have over 300 classes to choose from  
with classes for all ages.

Saturday 30th & Sunday 31st July

At the Show Field, Clevedon Road, Portishead. BS20 7RA

Programme schedules are available in a number of shops in the town

Show Entry £8.00 (or £7.50 in advance) ACCOMPANIED CHILDREN FREE - FREE PARKING

For what's on and when see

[www.portisheadsummershow.com](http://www.portisheadsummershow.com)



## SUMMER SHOW SCHEDULE

Thank you for supporting the Portishead Summer Show.

This Summer Show Schedule was published by Friends of Portishead Summer Show - led by Tracey Fowler and Tracie Fry, working with Portishead and District Horticultural Society and Portishead Summer Show Committee.

Design by Tracie Fry @Creative Solutions

Printed by Quay Digital

To advertise in next year's schedule, please email:  
friendsofportisheadcommunity@gmail.com or to get involved in the show, call  
Linda on 01275 817350

Every effort has been made to ensure the accuracy of information contained in this publication, liability for any omissions or errors cannot be accepted by the publisher.

Advertising copy has been provided by the individual advertisers and the copyright for these remains with the advertisers concerned or with the designer.

**“Another great event!  
Thanks to all for organising.  
See you there ...”**

**Interested in learning more about how  
we can help you with Salesforce?**

Astrid Feige  
**Force4U Ltd**  
astrid.feige@force4u.net  
07702 235 265

**force<sup>4</sup>u**  
Salesforce Solutions



Creative by: Burleigh Create, Portishead [www.burleighcreate.co.uk](http://www.burleighcreate.co.uk)  
Image by: Lumosia, Portishead [www.lumosia.com](http://www.lumosia.com)

## DERRICK FOWLER

Property Maintenance  
& General Handyman



A family run business for more than 30 years.  
Everything from a dripping tap or leaking gutter to  
complete renovation

I'm happy to help  
Portishead born and bred!

Call: 01275 844868

Mobile: 07951770514

## FOXALL BUILDING

**BUILDING &  
Property Maintenance**

EXTENSIONS, ALTERATIONS,  
CONVERSIONS, CARPENTRY  
ALL INDOOR & OUTDOOR MAINTENANCE  
incl. Guttering, Painting, Patios, Walls, Fencing  
01275 847594 07802 365951  
sfoxallbuilding@aol.com  
CITY & GUILDS QUALIFIED

## Quay Digital

Design. Print. Communicate.

01275 390 550

www.quaydigital.net  
info@quaydigital.net

Unit 35, Kestrel Court, Harbour Road,  
Portishead, BS20 7AN

# Panasonic



Discover our range of OLED &  
LED 4K HDR Smart Televisions  
in-store & on-line today

# Freemans

47 High Street, Portishead  
www.powerbutton.co.uk



## FRAME YOUR GARDEN AT



Located behind  
The Hand Stadium  
Whitehouse Farm,  
Davis Lane  
Clevedon BS21 6TG

**Telephone:**  
**01275 400 155**

Open Monday - Friday 8am-5pm  
Saturday 8:30am-2pm

