

A close-up photograph of a cluster of vibrant pink azalea flowers with green leaves, set against a blurred background of more flowers and foliage.

**PORTISHEAD AND DISTRICT  
HORTICULTURAL SOCIETY**

# **PORTISHEAD SPRING SHOW**

**SATURDAY 9th  
MARCH 2024**

**THE FOLK HALL,  
HIGH STREET, PORTISHEAD  
12.30pm to 4.30pm**

**ENTRY TO SHOW £1 (PHS members free)**

**CHILDREN FREE**

**SCHEDULE AND ENTRY FORM**



# PROUDLY SUPPORTING

## Portishead Spring Show

SATURDAY 9th MARCH 2024

*Supporting our Community*

# GOODMAN & LILLEY

THE INDEPENDENT SALES , LETTINGS & LAND AGENTS

Rembrant House, 36 High Street, Portishead BS20 6EN

Sales: 01275 430440 | [sales@goodmanlilley.co.uk](mailto:sales@goodmanlilley.co.uk)

Lettings: 01275 299010 | [lettings@goodmanlilley.co.uk](mailto:lettings@goodmanlilley.co.uk)



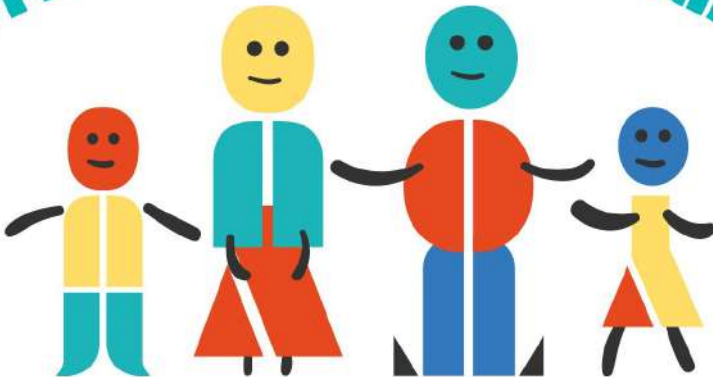
## The Portishead and District Horticultural Society



We hope you enjoy the first signs of spring on show here at the Portishead Spring Show 2024 after a long winter. Perhaps you will feel inspired to enter the show next year? We welcome entries from across the whole community. We also look forward to seeing you all at the Summer Show on 27th and 28th July.

For any queries or enquiries please contact Jane Pagano: 07875388079

**Footwear for all the family**



**Finding the right shoe for your sole**

**62 High St, Portishead . 1-2 Boyces Avenue, Clifton**

**[www.SoleLution.co.uk](http://www.SoleLution.co.uk)**





01275 375292



Follow us

A Garden Centre  
with plants at its  
heart

Twelve acres of  
gardener's paradise

---

The Garden Tea Room

Leigh Court Estate Pill Road Abbots Leigh Bristol BS8 3RA  
[www.brackenwood-plantandgardencentre.com](http://www.brackenwood-plantandgardencentre.com)



# Spring Show



The Portishead Spring Show is the first event of the year on the town's gardening calendar.

Talented green fingered enthusiasts, bakers and artists are invited to pack the venue with flowers, fruit, vegetables, cakes and crafts to celebrate the start of spring.

It's a fantastic event that presents a sea of scent and colour submitted by a good cross section of the local community, from children to senior citizens. Everyone is invited to take part; take a look through this schedule to see which classes you might like to enter.

Whether you are taking part or just visiting, the show provides an ideal afternoon out for all the family, with teas, coffee and light lunches served from 12.30pm.

The Portishead Spring Show takes place on Saturday 9th March at the Folk Hall in the High Street from 12.30-4.30pm. Admission is £1.00 with free admission for members and children.

If you would like to take part but don't know where to start, call Jane on 01275 843965, she will be happy to help.

*See you there!*



# Walnut Grove

The centre for health & wellbeing

**Helping You Get Back To Health and Keep You There.  
Supporting The Physical and Mental Health Of All Ages  
In Portishead and Beyond**

## **Therapies**

Osteopathy, Cranial Osteopathy, Physiotherapy, Acupuncture,  
Shockwave Therapy, Sports Therapy Massage, Homeopathy,  
Baby Head Moulding, Custom Orthotics, Foot Health  
Practitioner, Ear Wax Removal and Hearing Tests.

## **Classes**

Pilates: Mat, Equipment, Physio-led seated and Rehab.  
Healthy Hearts, Structured Movement Therapy Course, Yoga.

Walnut Grove Clinic, Slade Road, Portishead, BS20 6BB

**Tel: 01275 818303**

**[www.walnutgroveclinic.com](http://www.walnutgroveclinic.com)**

  @walnutgroveclinic & @wanutgrovestudio

Points are awarded as follows

1st 3 points; 2nd 2 points; 3rd 1 point

## HORTICULTURAL SECTION

### DAFFODILS/NARCISSI CUT FLOWERS

#### ONE VASE ONLY FOR EACH EXHIBIT

Class 1: Single flower - yellow petals - 1 stem

Class 2: Single flower - yellow petals - 3 stems

Class 3: Single flower - white petals - 1 stem

Class 4: Single flower - white petals - 3 stems

Class 5: Multi-headed - 1 stem

Class 6: Multi-headed - 3 stems

Class 7: Miniature daffodil - 1 stem

Class 8: Miniature daffodil - 3 stems



### CONTAINER GROWN BULBS

#### **CONTAINERS MUST NOT EXCEED 25cm & MUST STAND IN A SAUCER**

Class 10: Single daffodil - yellow petals: 1 container, maximum 5 bulbs

Class 11: Multi-headed daffodil: 1 container, maximum 5 bulbs

Class 12: Miniature daffodil: 1 container, maximum 5 bulbs

Class 13: Hyacinth - any colour: 1 container, maximum 3 bulbs

Class 14: Hyacinth - any colour: 1 container, 1 bulb

### MEMBERS ONLY CLASSES

Class 20: Variety - Jetfire: 1 container, maximum 5 bulbs

Class 21: Variety - Tete a Tete: 1 container, maximum 5 bulbs

Class 22: Variety - Jetfire: 1 vase, 3 stems

Class 23: Variety - Tete a Tete: 1 vase, 3 stems



# EVOLVE

DENTISTRY

## OFFERING A WIDE RANGE OF TREATMENTS

From general dentistry to full smile make-overs.

---

Proud to support the  
Spring Show 2024

---

BOOK YOUR FREE CONSULTATION WITH OUR TREATMENT CO-ORDINATOR

CALL US ON **01275 842 550**

EVOLVE-DENTISTRY.CO.UK

EVOLVE  
DENTISTRY

EVOLVE  
FACE



## OTHER CUT FLOWERS

### ONE VASE ONLY FOR EACH EXHIBIT

Class 31: Hyacinth - any colour - 1 spike

Class 32: Hellebore - 3 stems

Class 33: Camellia - 3 stems

Class 34: 3 flowering shrubs (excluding camellias)  
- 1 stem of each max 45x45cm (height unlimited)

Class 35: Collection of cut spring flowers -  
o fewer than 3 varieties

Class 36: Any other flowering garden plant - 1 stem



### OTHER POT PLANTS

#### **CONTAINERS MUST NOT EXCEED 25cm AND MUST STAND IN A SAUCER OR PLANT POT HOLDER**

Class 41: Amaryllis - 1 plant

Class 42: Primrose or primula - any colour - 1 plant

Class 43: Any other flowering bulbous plant (including corms and rhizomes) not mentioned in previous classes

Class 44: Orchid - 1 plant

Class 45: A plant grown for foliage

Class 46: One cactus or succulent

Class 47: Any other flowering house plant

### VEGETABLES

Class 51: 3 leeks (trimmed)

Class 52: 3 parsnips

Class 53: 3 sticks of rhubarb

Class 54: Any other seasonal vegetable



### FLORAL ART

Class 55: Take Five Flowers - max size: 50x50cm

Class 56: Love Your Garden - an exhibit in a basket - max size: 50x50cm

Class 57: The Rustle Of Spring - max size: 50x50cm



We are proud to be your local installer of

**Fire Alarms | Intruder Alarms | CCTV | Access Control  
Fire Extinguishers | Emergency Lights | Nursecall & Staff Attack**

We will ensure that your systems are fully compliant with current legislation, backed up by our audited accreditations with NSI and BAFE

**We protect your people, your property, and your peace of mind**

Give our friendly team a call on

0800 999 3 911

or

01275 373 098



## PHOTOGRAPHY

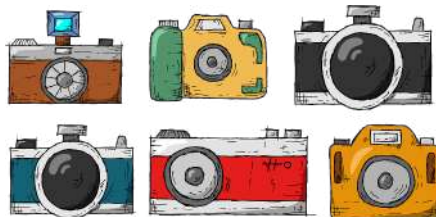
All photographic entries must be UNMOUNTED AND UNFRAMED. They must be in an envelope with your name and address on and HANDED IN BEFORE 7pm ON THE MONDAY preceding the show.

Photographs must not have previously been exhibited in this show. The back of each photograph should carry a self-adhesive label with your name and class number. Maximum 3 entries per class.

Class 61: Spring - 7"x5" print

Class 62: On The Water - 7"x5" print

Class 63: Smile Please! - 7"x5" print



## ART & HANDICRAFTS

Class 64: A homemade Easter Bonnet

Class 65: Painting - any medium - maximum size 40x40cm including frame

Class 66: A knitted item

Class 67: Any piece of stitched canvas work - maximum size 60x60cm including frame

Class 68: 3 handmade flowers in a jam jar - any material

Class 69: Adult colouring - from a colouring book, maximum size A4

Class 70: Design a card wishing someone a Happy Easter

Class 71: Any other handcrafted item - space allowed: 40x40cm

Class 72: A decorated hardboiled egg - children only



# Rehabilitation & Hydrotherapy for your pet



**WATKINS & TASKER**  
VETERINARY GROUP

**Based at  
Portishead  
Practice**

**Offering a range of holistic and therapeutic veterinary  
treatments to enhance your pet's quality of life**

**01275 405905 | [www.hydro.vet](http://www.hydro.vet)**

**[www.watkins-tasker-vets.co.uk](http://www.watkins-tasker-vets.co.uk)**





Wishing the Portishead  
Spring Show the best  
of luck on 9th March



Reeds Rains

• Since 1868 •

## Thinking of moving in 2024?

Whether you're buying, renting, selling or letting,  
we have everything you need all under one roof.  
Here to make property buying, selling, letting and  
renting a pleasurable, stress-free and fast experience  
for all involved

58 High Street, Portishead BS20 6EL

Tel: 01275 843371

Email: [portishead@reedsrains.co.uk](mailto:portishead@reedsrains.co.uk)

Also on Clevedon Triangle





## COOKERY

**Entries in classes 73- 78 should be displayed on a plate in a clear polythene bag (not clingfilm).**

All the entries will be sampled by the judge.

Class 73: 4 Flapjacks - own recipe

Class 74: Victoria sandwich

### Recipe

175g (6oz) margarine, 175g (6oz) caster sugar, 175g (6oz) SR flour, 3 eggs, jam filling, dust with caster sugar only.

Mixture must be baked in two sandwich tins, maximum 20cm (8")

Class 75: Carrot cake - own recipe

Class 76: 4 fruit scones - own recipe

Class 77: Simnel cake - own recipe

Class 78: 4 Easter biscuits - own recipe

Class 79: A jar of chutney - own recipe

Class 80: A jar of fruit jam or jelly - own recipe

Class 81: A jar of marmalade - own recipe

Class 82: A jar of lemon curd - own recipe



**tonic**  
hair and beauty house  
your skin and hair specialists

**Complimentary  
Skin Analysis**  
with this advert (worth £30)  
start your personalised skin journey

**01275 843 554**  
[www.tonichairandbeautyhouse.com](http://www.tonichairandbeautyhouse.com)  
2 Combe road Portishead BS20 6BJ

# Need legal advice?

**WARDS**  
SOLICITORS

We offer expert  
legal services for you,  
your family and  
your business.

**Get in touch: 01275 850460**  
**2 Harbour Road, Portishead,**  
**Bristol, BS20 7EL**

**wards.uk.com**

Offices in:

Bradley Stoke | Central Bristol | Clevedon | Henleaze | Keynsham | Nailsea  
Portishead | Staple Hill | Thornbury | Weston-super-Mare | Worle | Yate

**Solving your legal problems ...locally**

# ENTRY FORM

## PORTISHEAD HORTICULTURAL SOCIETY SPRING SHOW – SATURDAY 11th MARCH 2023

Entry forms and appropriate fees to be handed in to **Elaine Hall** (see Show Regulations on p.17) by **7.00pm on the WEDNESDAY prior to the show**. Entries for **Photography** classes should be handed in by **7.00 pm on the MONDAY** prior to the show.

If entering more than ONE exhibit in any class please show on a separate entry line.

**Entry fee: 30p per exhibit.**

Name.....(Capital letters please)

Address.....Post Code.....

Phone Number.....

Exhibitors no: (Official use only)

FOR OFFICIAL USE ONLY

Class	Class Description	Entry Fee	Award	Prize Money

# SAFETY HORIZON

South West

**Consultancy** Risk assessments, policies, procedures, audits, fire risk assessments, coaching and more.

**Training Courses** CITB, IOSH and UKATA courses plus other Health & Safety training.



Safety Horizon (South West) provides a complete health and safety consultancy and training service, helping you ensure your business is fully compliant with all relevant legislation.

Based in Bristol our team is advising and working with businesses throughout the South West and across the UK.

Leigh Court Business Centre, Pill Road, Abbots Leigh, Bristol BS8 3RA

You can contact us via our website [www.safetyhorizonsw.com](http://www.safetyhorizonsw.com)

or email [support@safetyhorizonsw.com](mailto:support@safetyhorizonsw.com)

## SPOTON MORTGAGES

A personal, free advice & arrangement service  
for your mortgage and insurance needs

Appointments all held via video link at a time  
convenient to you

- Remortgages
- Purchases
- Residential
- Buy to Let
- Home Protection
- Insurance - for you and your family

Tel: 01275 849059 Mobile: 07788 418 119

Website: [www.spotonmortgages.co.uk](http://www.spotonmortgages.co.uk) Email: [ian@spotonmortgages.co.uk](mailto:ian@spotonmortgages.co.uk)

Your home may be repossessed if you do not keep up payments on a mortgage or loan secured against it.



# SHOW REGULATIONS

- 1) All entries to be made on the entry form in this schedule.
- 2) Show entry forms and appropriate fees to be given or sent by not later than 7pm on the WEDNESDAY prior to the show (photography entries no later than 7pm on the MONDAY prior to the show) to:

Elaine Hall

27 Falcon Close

Portishead

BS20 6UT

- 3) Exhibitors may make a maximum of 3 entries in any class but are restricted to ONE PRIZE per class.
- 4) All horticultural exhibits to have been under cultivation or in the possession of the exhibitor for at least two months prior to the show. Exhibits in the other sections must be the exhibitor's own work. Floral art material may be purchased.
- 5) Exhibits to be staged on the date of the show between the hours of 8am and 10am when the hall will be cleared for judging.
- 6) The judges' decision is final.
- 7) Any protest must be made to the secretary before 2.30pm on the day of the show.
- 8) The cup presentation will be held at 4.30pm and exhibits may be removed afterwards. NO exhibit may be removed before this time.
- 9) The committee, whilst taking care with exhibits, cannot accept responsibility for any loss or damage. They have the right to move any exhibit to assist display.
- 10) The judges will recognise the correctness of naming as telling in favour of any exhibit in close competition.
- 11) Children are welcome to enter any class. Please state age on the entry form.
- 12) The placing of exhibits is regarded as acceptance of the above regulations.
- 13) The entry fees are 30p per exhibit.

The prize money is 1st = £1; 2nd = 75p; 3rd = 50p



## **Richwood Construction**

James Hailwood

**07799 821652**

richwoodconstruction@hotmail.co.uk



## **Richwood Roofing**

Paul Richards

**Tel: 01275 814097**

**07896 2421969**

richwoodconstruction@hotmail.co.uk



## **Richwood Electrical**

Rob Goddard

**07864 805644**

richwoodelectrical@hotmail.com



## **Richwood Plumbing & Heating**

Darcy Hart

**07782 171961**

richwoodplumbing@hotmail.co.uk

**[www.richwoodconstruction.co.uk](http://www.richwoodconstruction.co.uk)**

**DOMESTIC & COMMERCIAL**



## CUPS TO BE AWARDED

The Alan Paddick Shield will be awarded to the person who gains the most points in all sections.

The Garden Cup will be awarded for the best exhibit in members' only classes (classes 20 to 23).

The Flower Cup for the best exhibit in "other cut flowers" classes (classes 31 to 36).

The Edwina Tovey Cup will be awarded for best exhibit in pot plant classes (classes 41 to 47).

The Dawn Mullan cup will be awarded for best exhibit entered by a resident in a residential home.

The P Smith Cup will be awarded for best exhibit in cookery classes (classes 73 to 82).

The Fothergill Cup will be awarded for the best exhibit in the handicraft classes (classes 64 to 72).

**VALE  
VETS**  
24 HOUR CARE



**We're always here  
for poorly pets!**

- Weekday opening 8.00am – 7.30pm
- Appointments 7 days a week
- 24 hour hospital & emergency care
- Pet food, accessories, preventative treatments and more
- Barks & Bubbles dog grooming on site

**01275 847400**



[www.portisheadvets.co.uk](http://www.portisheadvets.co.uk)

For a local burial or cremation choose  
a Golden Charter funeral plan from

F H HALLIDAY AND SON

# Peace of mind. Protected payments. And the send-off you really want.



It's never easy to think about death, and many people put off planning for their funeral or even avoid it altogether. And yet there are several very good reasons why having a funeral plan in place makes perfect sense – from an emotional, practical and financial point of view. So don't put off planning ahead any longer. Now is the time to get started.

Call us today to request your FREE guide and discover the peace of mind a funeral plan can bring. There's no commitment and no obligation, just the chance to find out more.

## The smart way to plan ahead for your funeral

- ☒ Specify your wishes in advance and arrange the send-off you really want
- ☒ Help protect your family from worry and expense
- ☒ Fix the cost of the funeral director's services included in your plan<sup>1</sup>
- ☒ Your plan payments are protected in the Golden Charter Trust<sup>2</sup>
- ☒ Easy to apply with no medical questions

St Peters Court  
115 High Street  
Portishead  
Bristol BS20 6PT

Act now for one less thing to worry about.  
Request your free funeral plan brochure:

 (01275) 842120  [fhhalliday.co.uk](http://fhhalliday.co.uk)

Proud to offer funeral plans by

**Golden Charter**   
Smart Planning for Later Life

1. Plans can also include an allowance towards third party costs which are essential, non-funeral director services such as cremation or burial fees, plus the minister or officiant's fee to perform the service. 2. Your payments are held in the Golden Charter Trust. For more information on how your payments are protected, please visit [goldencharter.co.uk/faqs](http://goldencharter.co.uk/faqs)  
F H Halliday & Son Ltd is an appointed representative of Golden Charter Limited trading as Golden Charter Funeral Plans which is authorised and regulated by the Financial Conduct Authority (FRN:965279).





## PORTISHEAD SUMMER SHOW

The Portishead Summer Show is a two-day annual event that provides a really great day out for visitors of all ages. Organised by volunteers from the Portishead and District Horticultural Society, the show is a combination of a traditional flower and produce show and a country fair, with something for everyone from live music and shopping to animal shows and children's games. There are three marquees in which you will find fantastic displays of exhibits and around 85 trade stands.

Anyone can enter the many different classes, start growing your own fruit, flowers and veg or enter your baking, preserves, photography and art. Schedules are available from early March – you can purchase one at the Spring Show!

Whether you are taking part or just visiting, one thing's for sure, you'll have a great time!

# Portishead Summer Show

A weekend of family fun with something for everyone



At the Show Field, Clevedon Road, Portishead. BS20 7RA  
Live music and dance, children's entertainment, companion dog show, hot and cold food, trade stands and much more...

**Show entry tickets £8.00 in advance one day or £12.00 for two days.**

**Alternatively £10 and £15 on the gate**

**Accompanied children under 16 and PHS members free.**

**[www.portisheadsummershow.com](http://www.portisheadsummershow.com)**

**27th and 28th  
July 2024**

## THANK YOU

Thank you to all the volunteers who have worked so hard to make the Portishead Spring Show happen, to all those who have participated in and/or visited the event and to the advertisers that have supported this schedule/programme.

Without you all, this community event would not be possible.

This schedule has been produced by Friends of Portishead Community, led by Tracey Fowler and Tracie Fry, designed by Tracie Fry Creative Solutions and printed by Quay Digital. Every effort has been made to ensure the accuracy of information contained in this publication, liability for any omissions or errors cannot be accepted by the publisher ©2023



# Visit Portishead

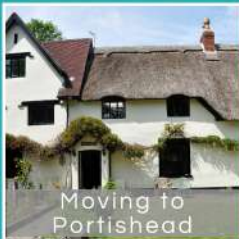
Dive in and discover more of Portishead



Visiting Portishead



Your Portishead



Moving to Portishead



Things to see and do



Portishead for business

[www.visitportishead.net](http://www.visitportishead.net)

# PHOENIX BAR

VICTORIA SQUARE, PORTISHEAD

PROUD OF OUR AWARD WINNING FLORAL DISPLAYS AND  
PLEASED TO BE SUPPORTING PORTISHEAD SPRING SHOW

FINE WINES, LAGERS, ALES, FANTASTIC COCKTAILS AND A  
WIDE RANGE OF NON-ALCOHOLIC DRINKS

LIVE MUSIC, SPORT ON TV & CHARITY EVENTS

A TRADITIONAL BAR IN THE HEART OF PORTISHEAD WITH  
OUTDOOR SEATING AND HEATED PATIO AREA

COME AND SEE US SOON!

TEL: 01275 817263

## ENJOY

Portishead

# ENJOY

Portishead

Full of engaging content, this publication offers  
news, views, lifestyle features and what's on  
information as well as promoting the town's  
independent businesses

Don't miss it! Pick up your copy free, every month  
available from:

- Beacon Hub
- Careys
- Co-op (Avon Way)
- Ebb & Flo
- Folk Hall
- Goodman & Lilley
- Hall and Woodhouse

- Lido Café
- Masala
- Max Minerva's  
Bookshop
- Neat Kitchens
- Parish Wharf
- Phoenix Bar
- Portishead Library
- Sainsbury's

- Seasons Florist
- SoleLution
- The Port
- The Windmill
- Tonic Hair & Beauty
- Vale Vets
- Venga
- Walnut Grove Clinic
- Watkins & Tasker Vets

This monthly glossy magazine is produced for the local community by Tracie Fry and  
Tracey Fowler, two media professionals with a passion for Portishead





**FOR ALL YOUR FENCING & TIMBER  
PROJECTS  
TRADE & DIY  
QUALITY PRODUCTS AT TRADE PRICES  
LARGE STOCKS AVAILABLE - PAY US A VISIT AND SEE  
FOR YOURSELF!  
WHITEHOUSE FARM, DAVIS LANE, CLEVEDON. BS21 6TG**



**Open Monday - Friday 8am - 5pm and Saturday mornings**

